

MSV Harvey Blue Sea



FEATURES

US Flag - Jones Act Compliant

Length Overall 340 ft / 103.7 m

12,435 ft² / 1,155 m² clean deck



Typical Projects

- » Inspection, maintenance, and repair (IMR)
- » Well intervention services
- » Well stimulation
- » Plug and abandonment operations
- » Subsea hardware installations
- » Tree, manifold, and umbilical installation
- » Jumper and flying lead installation

Specifications

Dimensions		Cargo Deck	
Length overall	340 ft / 103.7 m	Tonnage	2,600 Lt / 2,643 Mt
LBP	310 ft / 94.5 m	Strength	2,048 lb/ft ³ / 10.0 t/m ³
Beam	73 ft / 22.3 m	Length	174 ft / 53.1 m
Depth	29.3 ft / 8.9 m	Width	72.5 ft / 22.1 m
Light draft	11 ft / 3.4 m	Clear area	12,435 ft ² / 1,155 m ²
Loaded draft	24.5 ft / 7.5 m		
Deadweight	5,789 LT / 5,883 Mt	Performance	
		Maximum speed	13 kn
		Cruising speed	10 kn
Capacities		Accommodations	
Drill/Rig water	929,389 gal / 3,518 m ³	Cabin / berths	87 / 150
Fuel	280,275 gal / 1,061 m ³	Singles	24
Fresh water	116,247 gal / 440 m ³	Doubles	63
Sewage	10,791 gal / 41 m ³	Hospital	1 / 4
Graywater	20,339 gal / 77 m ³		

Lounges	2
Mess	1 / 74
Offices	3 / 1
Conference rooms	2
Cinema	1 / 63
Gym	1

Class and Flag

†A1, †AMS, Offshore Support Vessel (Heavy Lift), Circle E, †ACCU, †DPS-2, NBLES, ENVIRO+, GP, UWILD, HELIDK, MLC-ACCOM, SPS 2008, USCG, Subchapter "I" & "L," SOLAS

Machinery

Main generators	(4) X Wartsila 6L32 / 3,170 kW each
Total installed power	12,680 kW
Emergency generators	Cat. C-32 (1) X 900 kW @ 1800 rpm
Main drive motors	(2) X 3,350 kW 6,700 kW total
Azimuthing stern thrusters	(2) X Schottel SRP-3030 FPP 4,492 BHP each – 8,984 BHP total
Bow thrusters	(3) X Schottel STT5 FPP w/ VFD motors 2,100 BHP each – 6,300 BHP total

Deck Machinery

Subsea crane	(1) X NOV 250Mt AHC {OC4475KSCE – (75-250)-(36-14) (23) (20-40) AHC}
Hook height	144 ft / 44 m
Hook load in air at depth	189 Lt @ 6,500 ft / 192 Mt @ 2000 m hook
Load in air at depth	141 Lt @ 10,000 ft / 143 Mt @ 3000 m hook
Load in air at depth	93 Lt @ 13,000 ft / 95 Mt @ 4000 m
Stores crane	North Pacific Crane, MCT 327 w/ 20 hp HPU
Enclosed ROV hangers	(2) X 250 hp ROV/LARS working class system for 13,000 fsw / 4000 msw operations

Electronics and Controls

Dynamic positioning	Kongsberg KPas 21 DPS-2
DGPS	Saab R5 DGPS receiver system
Gyro	Anschutz Gyro/ Gyro-Redundant Compass System Standard 22 (3 ea)
Local reference	Weather facsimile FAX-408
Joystick	Kongsberg C-Joy system
Radars	(1) Raytheon Anschutz Pathfinder MKII, X-band transceiver, 25 kw w/8 ft antenna (1) Raytheon Anschutz Pathfinder MKII, S-band transceiver, 30 kW w/ 12 ft antenna
Depth sounder	Skipper Echo Sounder GDS101 50/200 kHz
Doppler speed log	Consilium T2 Dual Axis Acoustic Log

Communications

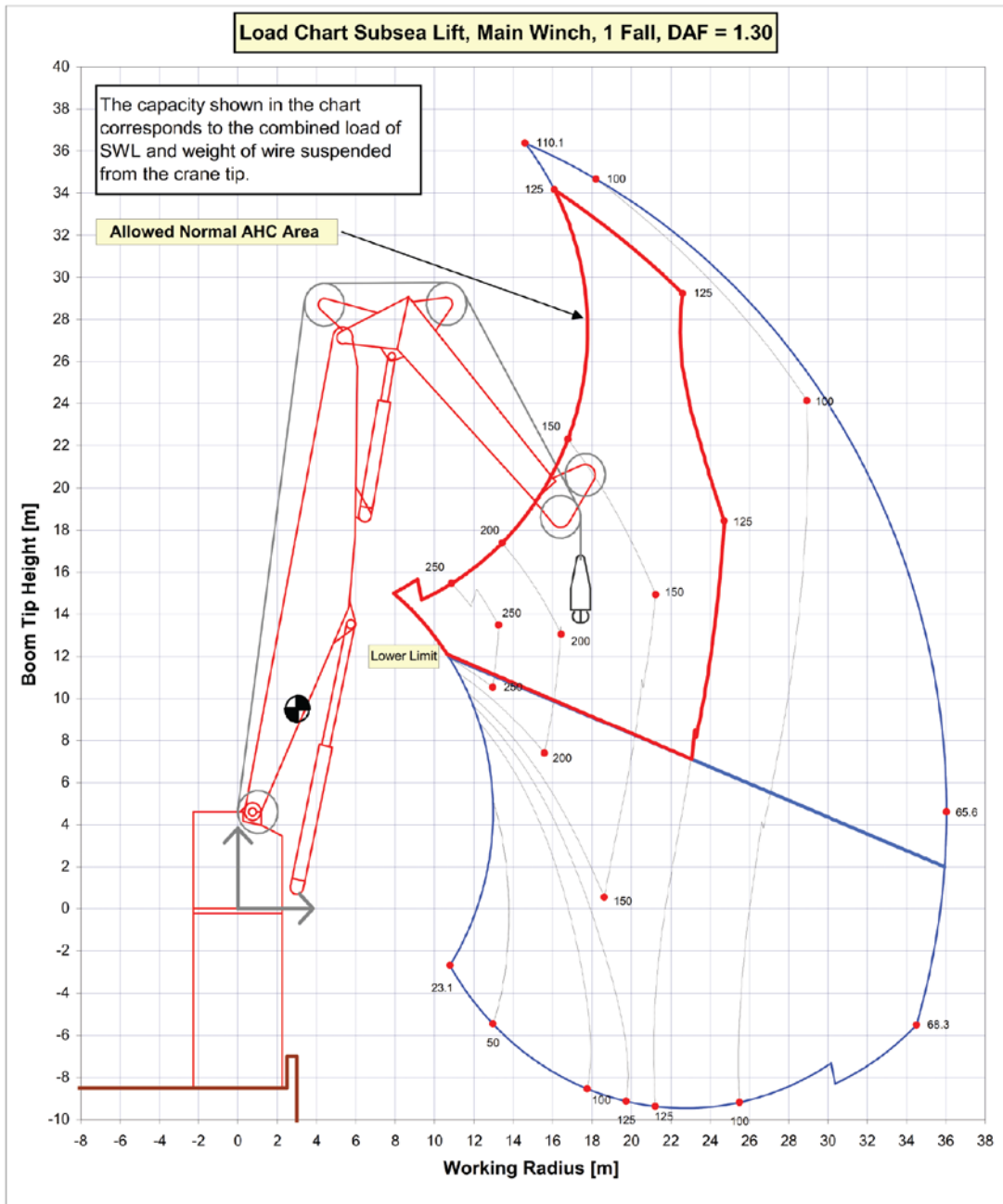
GMDSS	Sailor 3027C
SSB	Sailor Deck Stand 150W MF/HF, 2x INM Mini-C, 2x VHF
INMARSAT-C	Sailor Deck Stand 150W MF/HF, 2x INM Mini-C, 2x VHF
Navtex	JRC NCR-333 Navtex receiver
SSAS	Sailor 6194 terminal control unit

Safety

Life rafts	SOLAS approved
Fast rescue craft	FRSQ model 600 , 6.25 m x 2.11 m, (15) person, SOLAS rigid FRC
Lifeboats	(2) Norsafe JYN115C w/ LH-185 davit – (136 POB) (2) Norsafe JYN65DC – (36 POB)

Special Features

Helideck S- 61N, S-92 rated
Helideck luggage chute
Stabilizing tanks
Incinerator
Water maker
DPS hydro-acoustic well
Moon pool 24 ft X 24 ft



© 2018 Oceaneering International, Inc. All rights reserved.