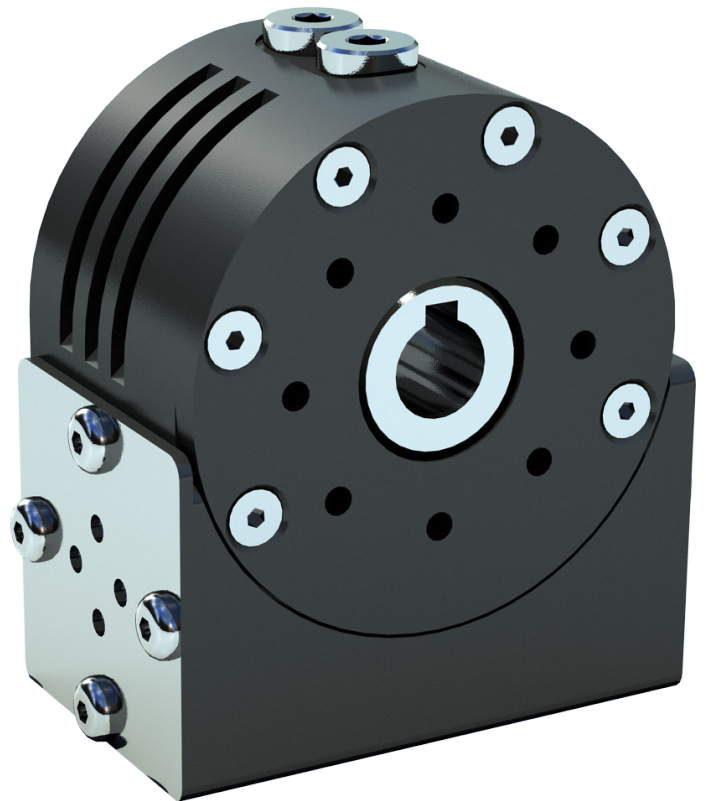


Subsea Worm Gears

Designed to deliver output torques up to 1,500 Nm

Oceanengineering's range of worm gears can be used in subsea applications to overcome the problem of water ingress occurring on available standard worm gears.



FEATURES

Field proven and compact design

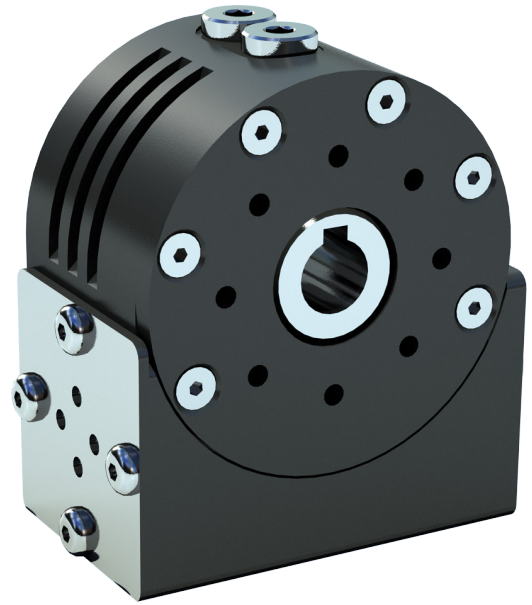
High output torque

Lightweight design

Subsea Worm Gears

Three worm gear sizes cover output torques up to 1,500 Nm. Various gear ratios are available for each size to enable the hardware to suit varied applications.

The transmission of the gear is oil-filled and compensated to prevent water ingress at all depths. The housing is manufactured in seawater-resistant aluminum (AL 6082-T6) and is coated with an appropriate surface treatment.



Technical Data

	Type 1: A31	Type 2: A53	Type 3: A100
Gear ratio	from 2.5:1 to 100:1	from 4.75:1 to 75:1	from 6.75:1 to 107:1
Max output torque	Up to 100 Nm *	Up to 400 Nm *	Up to 1,500 Nm *
Motor series	Sauer Danfoss OML 32	Danfoss OMM 32	Parker Torqmotor™ TE 50
Weight (in air/in water)	6 lb / 4.9 lb 2.7kg / 2.2kg	12.3 lb / 9.4 lb 5.6 kg / 4.4 kg	59.5 lb / 46.3 lb 27 kg / 21 kg
Dimensions (L x W x H)	8.2 x 3.9 x 2 in 20.8 x 9.9 x 5.1 cm	10 x 5.7 x 2.8 in 25.4 x 14.5 x 7.1 cm	14.5 x 10.6 x 4.8 in 36.8 x 27 x 12.2 cm

* Dependent on gear ratio, RPM, and specified lifetime.