

# Subsea NORM Inspection Tool

The Oceaneering subsea NORM (naturally occurring radioactive material) inspection tool enables the completion of in-situ subsea investigation of potential NORM internal scale buildup in pipes, flowlines, and other subsea infrastructure.

Inspection data is used to support better decision making when addressing NORM and its implications for end-of-life fields.



## FEATURES

**ROV-deployable technology**

**Single NORM expert acts as surface operator**

**Mitigates risk and lowers costs by enabling better decision making**

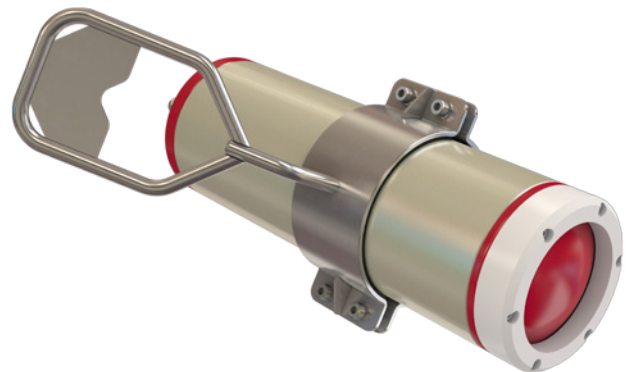
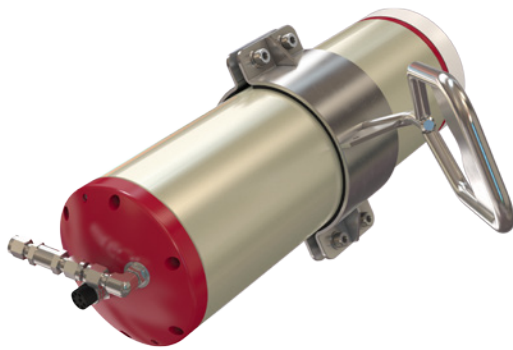
# Subsea NORM Inspection Tool

We offer an integrated, scalable solution for NORM detection and disposal supported by the Subsea NORM Inspection Tool. Our solutions directly enable operators to:

- » Use data to realize cost savings during decommissioning planning and execution
- » Weigh risks associated with methods of NORM disposal and determine the best approach to minimize risk and exposure to personnel and the environment
- » Develop a strong case for safe subsea abandonment of NORM containing assets to meet regulatory requirements
- » Manage the recovery and disposal of NORM affected assets using vetted, 3rd party vendors

Our experience in subsea inspection and intervention solutions and team of subject matter experts oversaw the in-house design of our Subsea NORM Inspection Tool, including the selection inclusion of the industry's most sensitive sensor.

Our team applies best practice across the complete project life cycle—from establishing inspection plans to final reporting and disposal of the NORM—to ensure compliance with stringent global regulations. Subsea Inspection is supported by an on-board NORM specialist.



## Technical Data

Water depth rating	9,843 ft / 3,000 m
Dimensions including D-handle (LxWxH)	18 x 7.9 x 13.6 in / 47 x 20 x 34.6 cm
Weight	29.3 lb / 13.3 kg
Inspection capability	Requires direct contact with asset surface. Can generate results through marine growth and coatings.
Connection Type	USB, TCIP (Ethernet)
Data transfer	Dive and log commentary transferred via ROV to the operator's laptop on the surface
Surface system	Operator interface via laptop provides real-time feedback and data logging
Final reporting	Include targeted survey, logs opportunistic points of interest, and ROV spatial data and readings

© 2017 Oceaneering International, Inc. All rights reserved.