

Diamond Wire Saw

ROV-operated metal cutting tool

The Diamond Wire Saw is an ROV-operated tool that can cut a number of materials, including metal, coated metal, and concrete structures by using a closed-loop diamond belt. The primary advantages of a diamond wire cutting tool is that it can cut through internals in a pipe and can cut pipes with flow inside. It is also compact in design, making it ideal for operations with limited space.



FEATURES

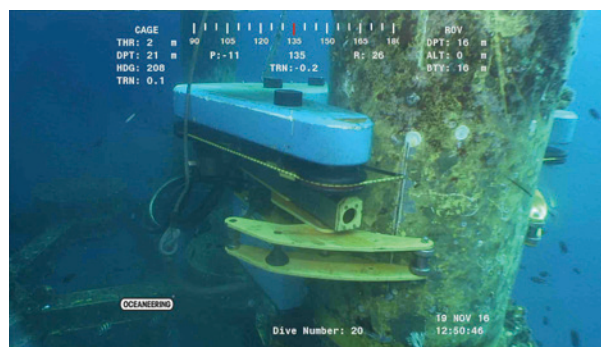
Field-proven, compact design

Easily interfaces with any work class ROV

Cuts structures up to 84 in (2133.6 mm)

Diamond Wire Saw

This tool is hydraulically powered by the ROV and is positioned using the ROV manipulator. It is controlled remotely by using the topside control panel (TCP) or by the ROV via zero-leak hot stabs. Its diamond wire cutting surface enables efficient cutting of hollow and solid structures. To extend the life of the diamond wire, the tool incorporates a unique passive tension relief function, which ensures that the wire is protected against any peak loading incurred by the tool.



Technical data

	4–6 in / 102–152 mm	12–30 in / 305–762 mm	16–36 in / 406–914 mm	30–52 in / 762–1321 mm	60–84 in / 1524–2134 mm
Depth rating	10,000 fsw / 3000 msw	10,000 fsw / 3000 msw	10,000 fsw / 3000 msw	10,000 fsw / 3000 msw	10,000 fsw / 3000 msw
Dimensions (LxWxH)	47.2 x 32.6 x 14.2 in / 120 x 82.5 x 36.0 cm		83 x 72 x 41 in / 211 x 183 x 104 cm		
Weight: In air In water	156.5 lb / 71 kg 110.2 lb / 50 kg		200 lb / 90.8 kg 100 lb / 45.3 kg		
Clamp capacity (OD)	4–16 in / 102–406 mm	12–30 in / 305–762 mm	16–36 in / 406–914 mm	30–52 in / 762–1320 mm	60–84 in / 1524–2134 mm
Cutting element	Quick-change loop diamond wire (replaceable)	Quick-change loop diamond wire (replaceable)	Quick-change loop diamond wire (replaceable)	Quick-change loop diamond wire (replaceable)	Quick-change loop diamond wire (replaceable)
Cutting wire speed	Variable, up to 1,500 rpm		Variable, up to 1,500 rpm		
Clamping pads	User replaceable, crush- resistant nylon clamping pads	User replaceable, crush-resistant nylon clamping pads	User replaceable, crush-resistant nylon clamping pads	User replaceable, crush-resistant nylon clamping pads	User replaceable, crush-resistant nylon clamping pads
Ambient temperature	-4°F to 218°C / -20°F to 100°C				
Drive options	Hydraulic	Hydraulic	Hydraulic	Hydraulic	Hydraulic
Power requirements	20 gal/min @ 2,000 psi / (76 l/min @140 bar)		20 gal/min @ 2,000 psi (76 l/min @140 bar)		
Handling	Subsea basket, three-wire sling		Subsea basket, three-wire sling		

© 2018 Oceaneering International, Inc. All rights reserved.