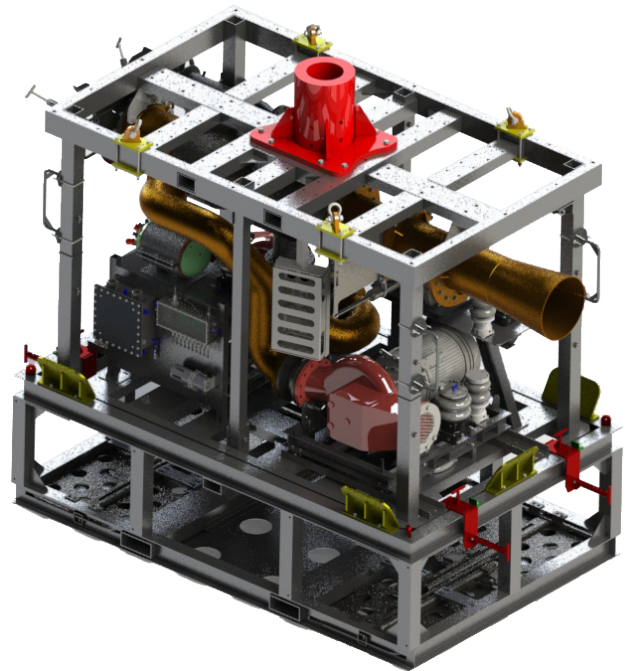


12 Inch Electric XL Dredge

Superior deepwater dredging
capability

The second generation 12 inch XL electric dredge provides 12.5k psi suction pressure and up to 7,500 suction gal/m. A topside control unit manages all dredge functions and monitors readings.



FEATURES

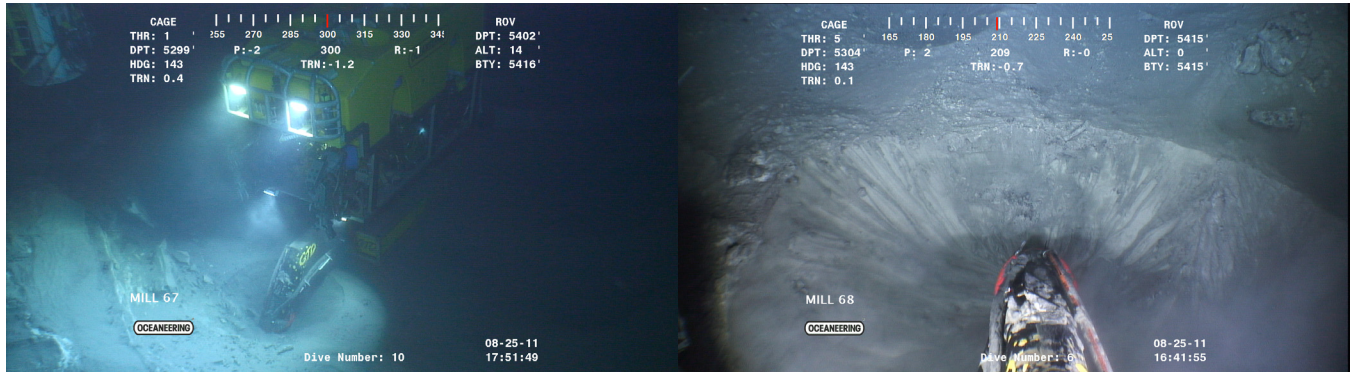
Full telemetry system

Cameras and lights monitor discharge

System's vital signs monitored by digital inputs

12 Inch XL Gen 2 Electric Dredge

Superior deepwater dredging capability



Capabilities

- » Removes soil from a specific area and transports it to a discharge site in a controlled manner
- » Provides the customer with varied techniques to meet the demands of numerous soil types of differing densities
- » Suction only: Provides suction with a single jet or suction with a high-pressure jetting ring
- » High-pressure jetting: Stiffer soils require high-pressure water jetting to loosen them and make available for transport
- » Low-pressure, high-volume jetting: Some soils require low-pressure, high-volume jetting to complete fluidization in order to complete transport

Benefits

- » Allows for spoils to pass unprocessed
- » Transports rocks and large debris of approximately ½ in smaller than hose diameter
- » No moving components exposed to transport materials, providing greater durability and reliability
- » No depth limitations, constant suction, and no loss of hydraulic horsepower due to hydrostatic effect
- » Dual pump configuration for redundancy

Applications

- » Drill cuttings remediation
- » Precision dredging around delicate assets
- » Seabed excavation and leveling
- » Subsea field clean-up
- » Pipeline excavation and burial

Dredge Specifications

Fully Electric System	
Suction power	Approximately 7,500 gal/m Supplied by two 150 hp pumps
Jetting power	Approximately 550 gal/m at 130 psi Supplied by a 100 hp pump
Skid weight	10,000 lb / 4,536 kg
Skid dimensions (LxWxH)	132 x 72 x 80 in 335 x 182 x 203 cm
Mudmat dimensions (LxWxH)	129 x 83 x 36 in 328 x 211 x 91 cm
Control van dimensions (LxWxH)	96 x 96 x 144 in 244 x 244 x 365 cm
Portable control module	
10,000 ft / 3,000 m depth rating	
Deployment / Recovery	
Deep water	LARS (launch and recovery system), winch deployed, or crane deployed Umbilical to surface for power
Shallow water	Via crane or tugger tether over side for power

© 2017 Oceaneering International, Inc. All rights reserved.