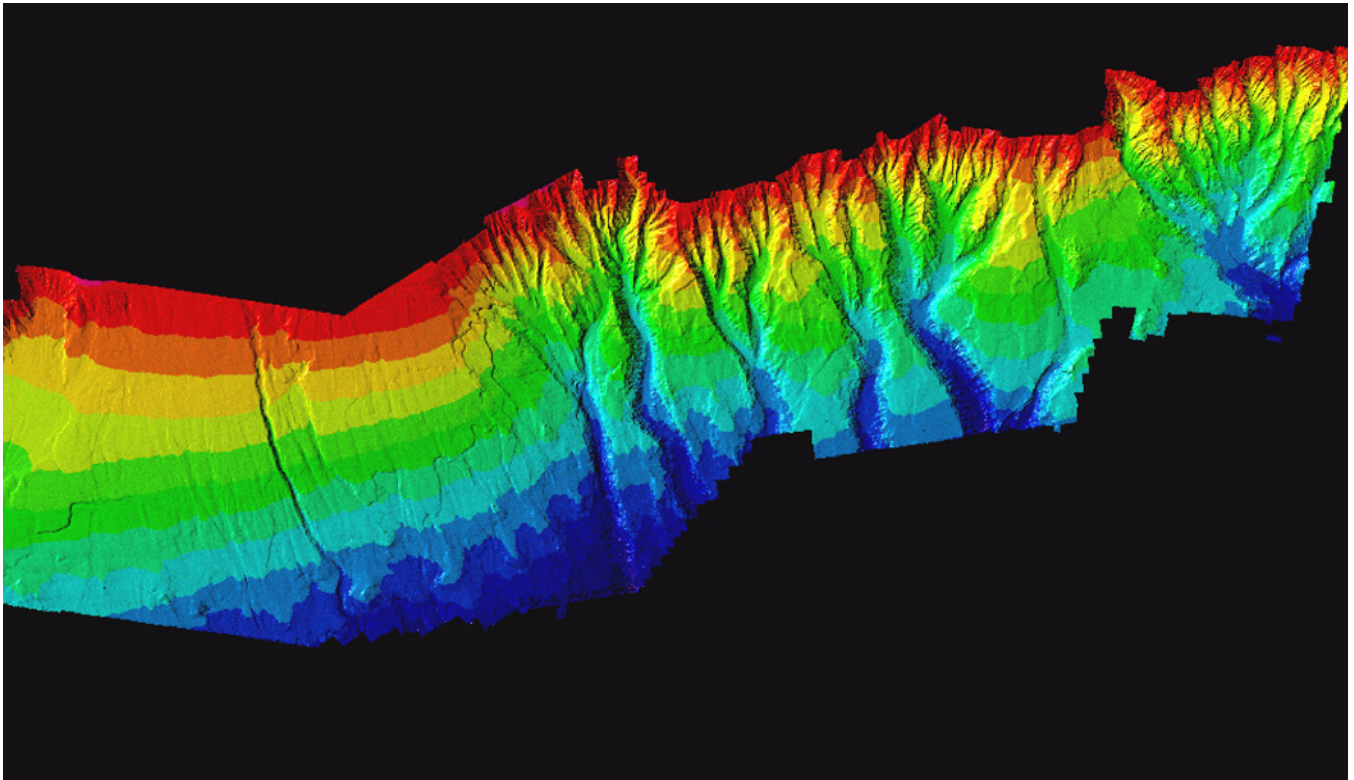


Geophysical Surveys



Our fleet of hull- and AUV-mounted multibeam systems use our proprietary HydroMap software to provide near real-time, precise seafloor charts from water's edge to full ocean depth.

Geophysical Surveys

Geophysical Vessels

Oceaneering uses vessels and hull- and AUV-mounted Simrad multibeam systems to meet shallow and deepwater geophysical survey requirements. Our vessels can be equipped with a variety of sonar, magnetometer, and seismic systems, including a state-of-the-art hydroscience seismic recording system to meet the multichannel seismic requirements of the current BOEM/BSEE Archaeological and Shallow Hazard Notice to Lessors (NTLs).



Typical Projects

- » 2D high-resolution seismic survey
- » Archaeological and hazard survey
- » AUV survey
- » Damage assessments
- » Exclusive economic zone survey
- » Geohazard assessment studies
- » Multibeam bathymetry survey
- » Pipeline/cable route preliminary survey
- » Speculative survey

■ For more information: oceaneering.com/survey

© 2017 Oceaneering International, Inc. All rights reserved.