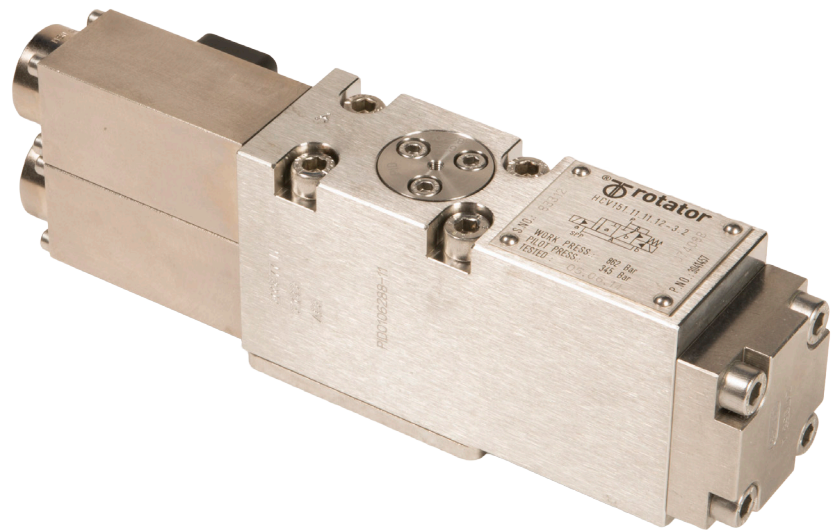


Hydraulic Directional Control Valve

Series 15 - HCV 151.11.50.00-3.2

Our range of hydraulic directional control valves (HCVs) is suitable for use in harsh subsea environments, and are designed to meet pressure requirements up to 20,000 psi (1,380 bar) and water depths of 13,120 ft (4,000 m).



FEATURES

Suitable for high pressure applications

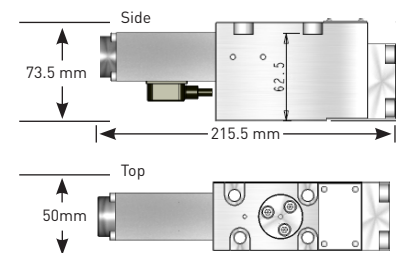
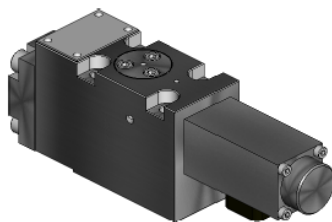
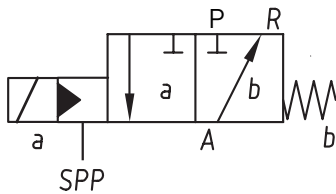
Contamination tolerant

Robust, field-proven design

Technical Specifications

General		Capacity	
Type	HCV 151.11.50.00-3.2	Cv, P - A	0.23
Operation	Continuously activated solenoid/hydraulic operation to open position. Spring return to closed position.	Cv, A - R	0.20
Port	3	Steady state leakage	Less than 0.2 ml/min
Position	2	Cleanliness requirements	SAE4059D, class 12 (main), class 8 (pilot)
Mounting	Subplate	Electric Data	
Weight	8.3 lb / 3.8 kg	Nominal voltage	24 V DC
		Nominal power	12.5 W
Materials		Operations	
Body	AiSi 316	Number of operations @ 5,000/5,000 psi (345/ 345 bar) supply pressure	1,000,000*
Slide	TuNi	Operating Temperature	14 to 122°F / -10 to +50°C
Seat	TuNi		
Pilot parts	Fully seawater corrosion resistant materials	Fluid	
		General	Water/glycol and mineral oil based subsea fluids
Pressures			
Proof pressure Supply/pilot/return	570 bar / 570 bar / 570 bar 8,250 psi / 8,250 psi / 8,250 psi		
Supply pressure	90 - 345 bar / 1,300 - 5,000 psi		
Pilot pressure	90 - 345 bar / 1,300 - 5,000 psi		
Maximum return pressure	345 bar / 5,000 psi		
External pressure	400 bar / 5,800 psi		

*The lubricity of different fluids varies and will influence the number of operations.



- For more information: rotator@oceanering.com