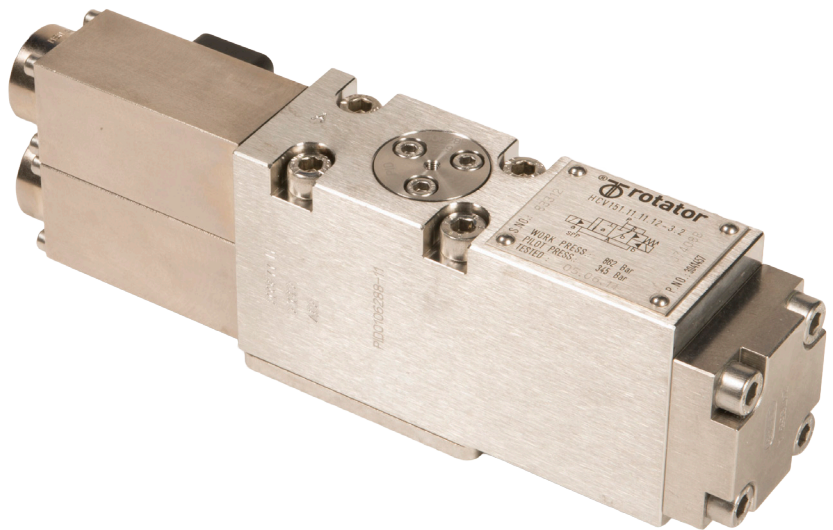


# Hydraulic Directional Control Valve

Series 15 - HCV 151.11.11.12-3.2 (standard)

Our range of hydraulic directional control valves (HCVs) is suitable for use in harsh subsea environments, and are designed to meet pressure requirements up to 20,000 psi (1,380 bar) and water depths of 13,120 ft (4,000 m).



## FEATURES

**Suitable for high pressure applications**

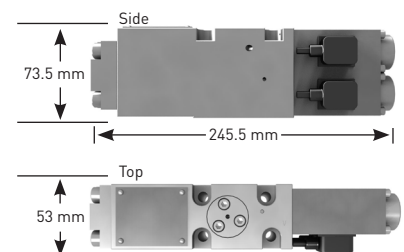
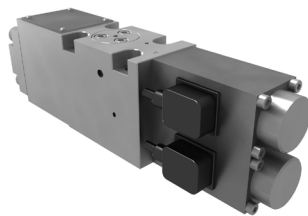
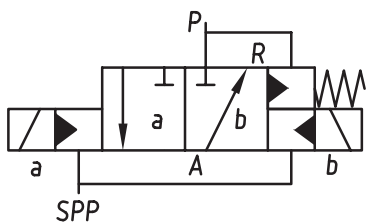
**Contamination tolerant**

**Robust, field-proven design**

## Technical Specifications

General		Capacity	
Type	HCV 151.11.11.12-3.2 (standard)	Cv, P - A	0.23
Operation	Pulse activated solenoid/hydraulic operation to closed/open position. Valve will latch to closed position when supply pressure falls below a specified level.	Cv, A - R	0.20
Port	3	Steady state leakage	Less than 0.2 ml/min
Position	2	Cleanliness requirements	SAE4059D, class 12 (main), class 8 (pilot)
Mounting	Subplate	Electric Data	
Weight	11.7 lb / 5.3 kg	Nominal voltage	24 V DC
		Nominal power	12.5 W
Materials		Operations	
Body	AiSi 316	Number of operations @ 5,000 / 5,000 psi (345/ 345 bar) supply pressure	50,000*
Slide	TuNi	Number of operations @ 12,500/5,000 psi (862/345 bar) supply pressure	25,000*
Seat	TuNi	Operating Temperature	14 to 122°F / -10 to +50°C
Pilot parts	Fully seawater corrosion resistant materials	Fluid	
Pressures		General	Water/glycol and mineral oil based subsea fluids
Proof pressure supply/pilot/return	1,420 bar / 570 bar / 570 bar 20,600 psi / 8,250 psi / 8,250 psi		
Supply pressure	90 - 862 bar / 1,300 - 12,500 psi		
Pilot pressure	90 - 345 bar / 1,300 - 5,000 psi		
Maximum return pressure	345 bar / 5,000 psi		
External pressure	400 bar / 5,800 psi		
Reset supply pressure	50 ± 5 bar / 725 psi ± 72 psi		

\*The lubricity of different fluids varies and will influence the number of operations.



■ For more information: [rotator@oceanering.com](mailto:rotator@oceanering.com)

© 2018 Oceanering International, Inc. All rights reserved.