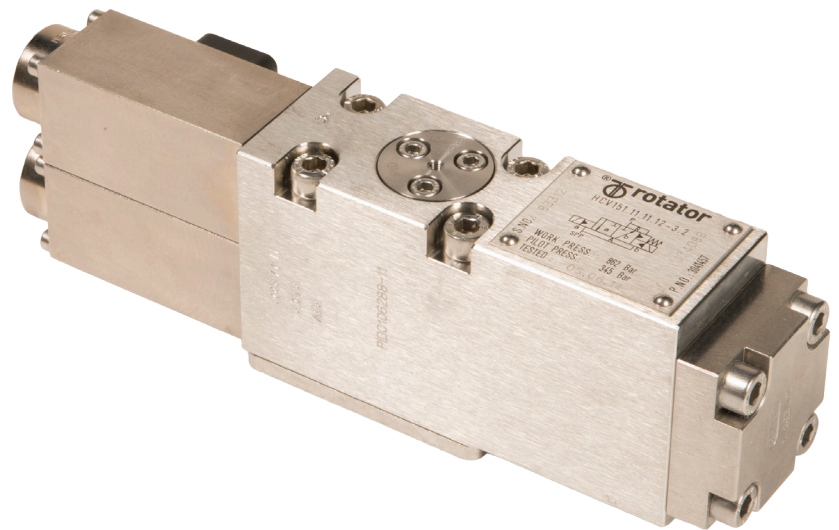


# Hydraulic Directional Control Valve

Series 15 - HCV 151.11.11.12-3.2 (high pressure)

Our range of hydraulic directional control valves (HCVs) is suitable for use in harsh subsea environments, and are designed to meet pressure requirements up to 20,000 psi (1,380 bar) and water depths of 13,120 ft (4,000 m).



## FEATURES

**Suitable for high pressure applications**

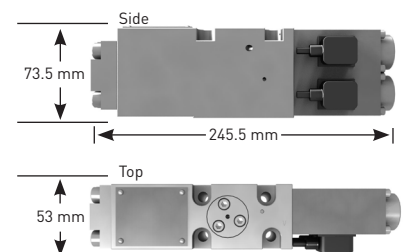
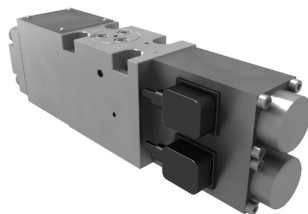
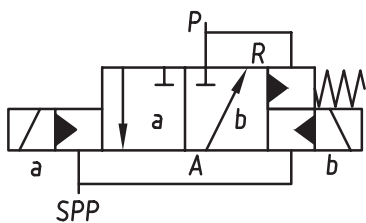
**Contamination tolerant**

**Robust, field-proven design**

## Technical Specifications

General		Capacity	
Type	HCV 151.11.11.12-3.2 (high pressure)	Cv, P - A	0.23
Operation	Pulse activated solenoid/hydraulic operation to closed/open position. Valve will latch to closed position when supply pressure falls below a specified level.	Cv, A - R	0.20
Port	3	Steady state leakage	Less than 0.2 ml/min
Position	2	Cleanliness requirements	SAE4059D, class 12 (main), class 8 (pilot)
Mounting	Subplate	Electric Data	
Weight	11.7 lb / 5.3 kg	Nominal voltage	24 V DC
		Nominal power	12.5 W
Materials		Operations	
Body	AiSi 316	Number of operations @ 20,000/ 5,000 psi (1,380/ 345 bar) supply pressure	25,000*
Slide	TuNi	Operating temperature	14 to 122°F -10 to 50°C
Seat	TuNi	Fluid	
Pilot parts	Fully seawater corrosion resistant materials	General	Water/glycol and mineral oil based subsea fluids
Pressures			
Proof pressure supply/pilot/return	1,900 bar / 570 bar / 570 bar 27,500 psi / 8,250 psi / 8,250 psi		
Supply pressure	110 - 1,380 bar / 1,600 - 20,000 psi		
Pilot pressure	110 - 345 bar / 1,600 - 5,000 psi		
Maximum return pressure	345 bar / 5,000 psi		
External pressure	400 bar / 5,800 psi		
Reset supply pressure	50 ± 5 bar / 725 psi ± 72 psi		

\*The lubricity of different fluids varies and will influence the number of operations.



■ For more information: [rotator@oceanneering.com](mailto:rotator@oceanneering.com)

© 2018 Oceanneering International, Inc. All rights reserved.