

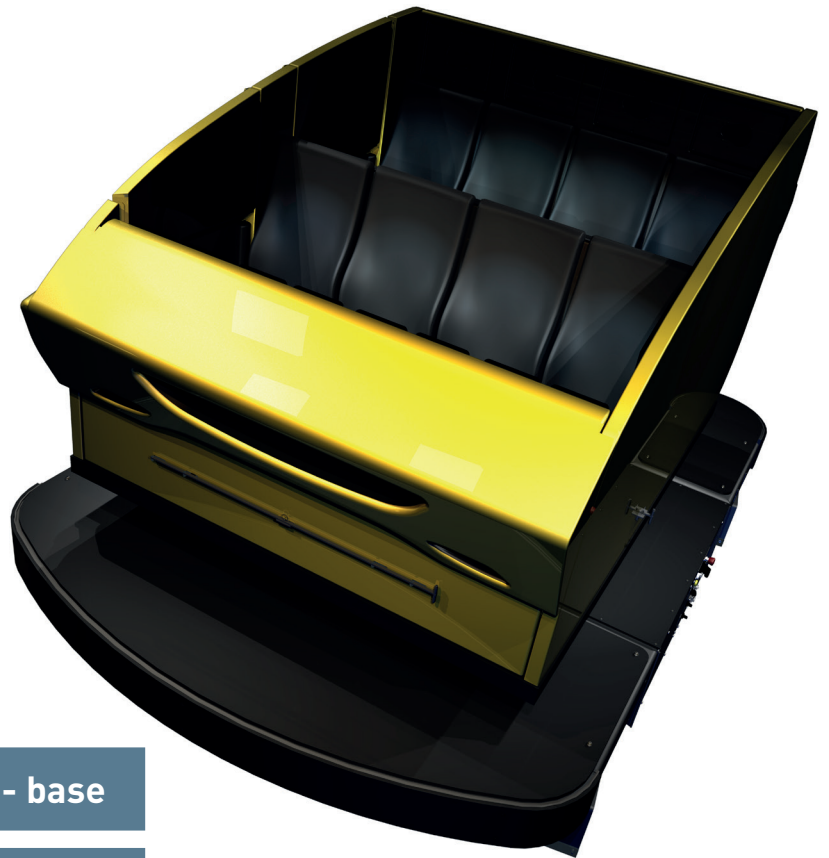


[oceaneering.com](http://oceaneering.com)

# Evolution™

## Transforming the ride experience

Oceaneering developed and patented a motion-base, dynamic tracked ride vehicle system capable of delivering high-energy thrills in fully immersive 3-D media-based attractions at a fraction of the cost of other systems.



### FEATURES

**Fully programmable 4-DOF motion - base**

**7, 8, and 12 passenger cabin options**

**Individual lap-bar restraint system**

Connecting What's Needed with What's Next™

# Evolution™

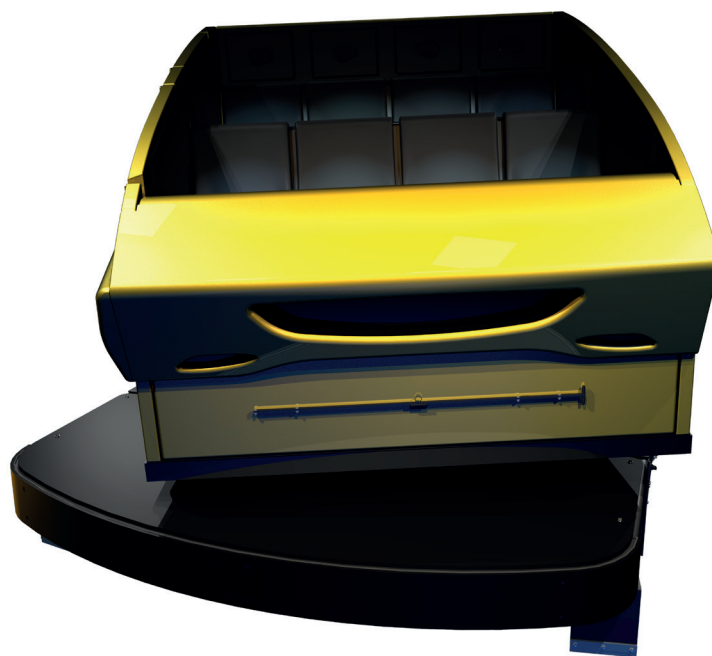
## Transforming the ride experience

### Features:

- » Can be choreographed to off-board video and audio
- » Fully programmable 4-DOF motion-base with pitch, roll, heave, and 360° continuous yaw
- » 16 channel audio playback through a dedicated 2.1 audio system

### Optional Upgrades:

- » Audio system with 5.1 surround
- » Integrated on-board gaming system



### Technical Data:

7, 8, and 12 passenger cabin configurations
Individual lap bar restraints
4 degrees of freedom: pitch, roll, heave, 360° continuous yaw
On-board audio system - 16 channels
Customizable themed cabin with fiberglass gel coat finish
ADA access for lateral transfer
Optional low-frequency seat effects
Option to include integrated on-board gaming system

### Performance

Propulsion	up to 6 ft/sec at an acceleration of .1 G
Cabin rotation	up to 15 RPM
Pitch/Roll	up to 15 deg/sec ( $\pm 7.5$ deg angular motion)
Heave	8 in / 20.3 cm
Clearance envelope	160 in / 406.4 cm
Vehicle length	144 in / 365.8 cm
Cabin Width	82 in / 208.3 cm
Vehicle width	108 in / 274.32 cm
Vehicle height	92 in / 233.7 cm
Minimum track radius	96 in / 243.8 cm
Vehicle weight	8,000 lb (empty) / 3,629 kg 9,400 lb (full) / 4,264 kg

- For more information: [Info-OES@oceaneering.com](mailto:Info-OES@oceaneering.com)

© 2017 Oceaneering International, Inc. All rights reserved.