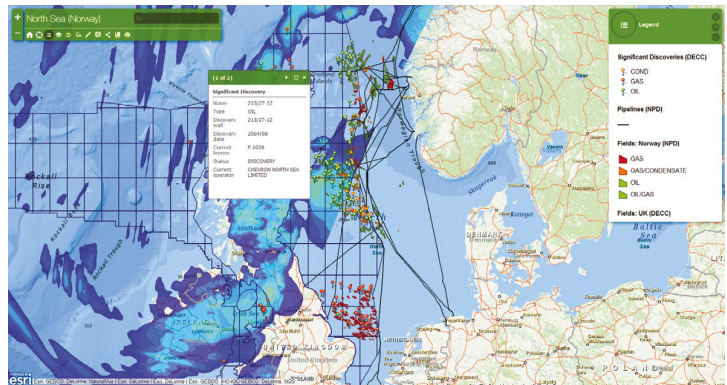


# GIS and ESRI Services

Oceanering® helps customers do business better through a Common Operating Picture (COP) of tactical operations. We are a leader in developing geographic information systems (GIS) that improve collaborative situational analysis and operational management in offshore, deepwater environments. Our solutions also deliver comprehensive reporting capabilities that can be shared by multiple organizations across many different locations.



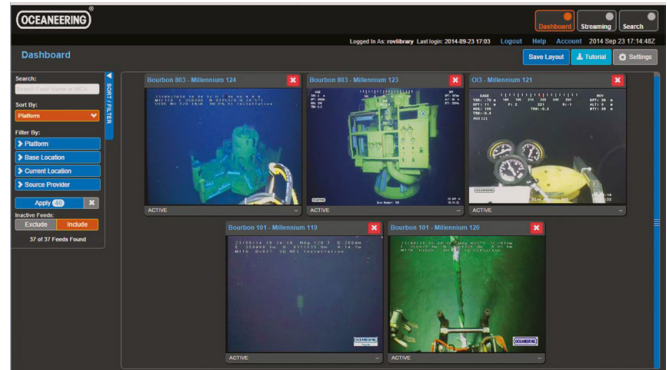
Quickly Deploy your COP in Any Region of the Globe with Oceanering GIS and ESRI Services. We offer all of the necessary tools and expertise to deploy your COP wherever it is needed, and will also directly support your internal GIS team with technical services, data and hosting. Your COP data can include vessel positioning information, weather, sensor feeds and various audio, video and other inputs, all coming from a variety of sources using many types of formats.

- » As an ESRI global partner, deploy ESRI technology, proprietary data (such as weather, ROV video, and our real-time PortVision® AIS vessel data), and core mapping layers to create your COP.
- » We have been awarded ESRI's "Partner of the Year" for wide adoption of ArcGIS online in the marine and upstream energy sectors.
- » Customers also use our GIS data and systems to support daily operations, emergency preparedness exercises, market analysis, training compliance activities, and litigation support.

# GIS and ESRI Services

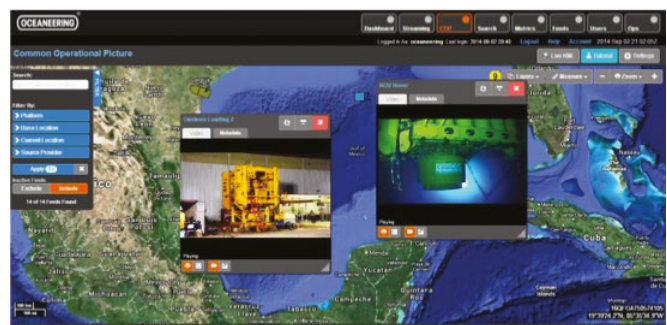
## Streamline daily operations and incident response

- » Collect and display all relevant live video and data related to daily operations.
- » Enhance visibility with a dashboard that delivers at-a-glance COP information.
- » Quickly gather, synthesize and disseminate incident information to all appropriate parties.



## Integrate your COP with other applications and systems, including:

- » Commercial systems such as OSIsoft PI and Maximo.
- » Video sources through Oceaneering's Video Services group.
- » Asset tracking through AIS and satellite M2M solutions.



## Take advantage of additional services and support

- » Incident response drills with GIS platforms, audio-visual technology, and data layers (feature service).
- » Active operational support in both offshore exploration and production activities, supporting your incident response and operations teams.

## Enhance visibility, analysis, management and reporting

Oceaneering Communications and IT Services has the technology and talent to solve your toughest real-time data challenges.

- For more information: [oceanering.com/data](http://oceanering.com/data), [data@oceanering.com](mailto:data@oceanering.com) or +1 713.337.3737

© 2017 Oceaneering International, Inc. All rights reserved.