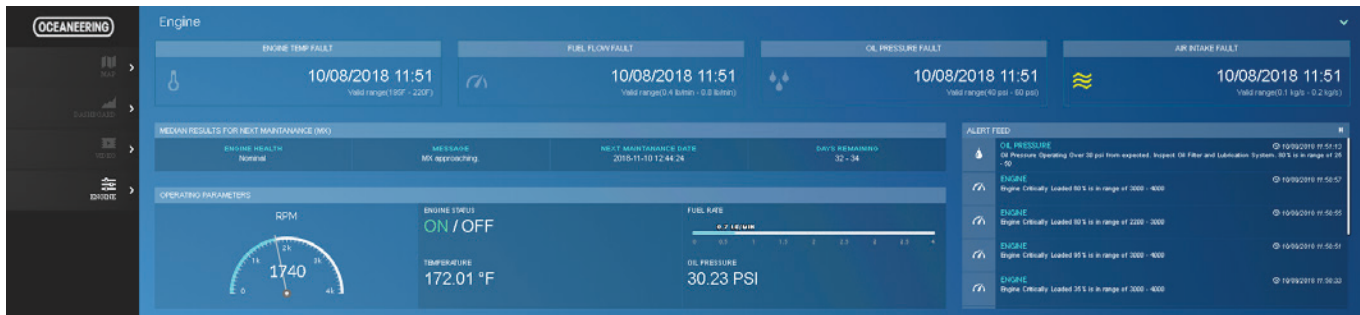


EDGEsmart™ Application

Data repository system for field assets



Achieve system and component performance visibility of the real-time operational status of your field assets with the next-generation EDGEsmart™ data application. This application provides the tools you need to monitor and proactively manage your assets to maintain system uptime while reducing nonproductive time. The EDGEsmart™ application enables predictive maintenance, real-time awareness, regulatory compliance, operational efficiency, business intelligence,

and machine learning capabilities—all with simple integration into your existing datasets for company-wide data availability.

The EDGEsmart™ application correlates thousands of tags per data source into a single visualization stream, which can be accessed by users via dashboards in the field or in shore-based operations. Leverage this rapid data transfer and shared access to streamline your root cause analysis process.

FEATURES

Visualizes data both in the field and onshore

Confirms real-time operational performance

Reduces asset and data downtime

EDGEsmart™ Application

Data repository system for field assets

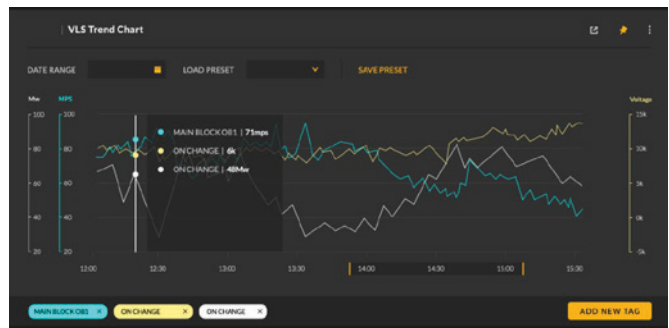
Rapid data transfer from sea to land

Use the EDGEsmart™ application to establish an Internet of Things (IoT) encompassing multiple field asset datasets, including dynamic positioning (DP), vessel lay, and crane systems. The application works by collecting data in an offshore asset repository and then pushing the data to a cloud-based repository, such as Microsoft Azure.

The EDGEsmart™ application correlates a minimum of three tags per data source into a single visualization stream, which can be accessed by users via dashboards in the field or in shore-based operations. Leverage this rapid data transfer and shared access to streamline your root cause analysis process.

Multiple data sources, single dashboard

We will work with you and your data vendors to ensure a seamless data transfer process from asset to cloud to shore. As needed, we will engage third parties to access the data sources required to make the most robust EDGEsmart application dashboard for your asset—better data in, better decisions out.



© 2018 Oceaneering International, Inc. All rights reserved.