

# Laser Scanner

## Surface replicator

Oceaneering offers an innovative approach to surface defect analysis. With advances in laser scanning technology, it is now possible to generate an exact replica of an asset's surface with a fully auditable visual corrosion assessment technique.



### FEATURES

**100% coverage of inspection area**

**Wide range of applications in temperatures up to 338°F / 170°C**

**Inspection material thickness up to 150 mm**

# Laser Scanner

## Surface replicator

Oceaneering engineers collect and analyse data using the latest Creaform HandySCAN 3D™ lasers and Pipecheck software programs. Pipecheck's pipeline corrosion software module offers fast and reliable data processing that generates instant, on-site results. Data is output in a detailed report that delivers increased accuracy and repeatability when compared to traditional measurements methods including pit gauge, ultrasonic probes, and single-line lasers.

### Unit and scanner

- » Lightweight, compact design
- » Can be used in confined spaces
- » Rope access deployable

### Surface preparation and operating environment

- » Clean and dry surface offers best results
- » Heavy or loose scale needs to be removed before inspection to achieve accurate pit depth sizing

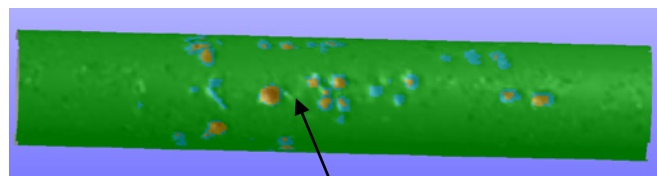
### Additional Features

- » A dynamic link between the pipe and scanner preserves accuracy and resolution in any environment affected by field vibrations
- » Exceptional accuracy
- » Enhanced virtual pit gauge capabilities
- » Pit gauge configuration automatically adapts near welds to ensure the most accurate measurement
- » Scanning speed is 80 times faster than pit gauge technique
- » Self-positioning device eliminates need for encoders or bulky mechanical scanners to reference the data
- » On-site reporting supported by expedited results



Operating procedure

3D image showing external pits



2D image showing map view with depth measurements