

C-NavTM

C-NavDongleCheck Users Manual

Revision 3

Revision Date: March 20, 2018

C-Nav Positioning Solutions
730 E. Kaliste Saloom Road
Lafayette, LA 70508 U.S.A.
oceanengineering.com/cnav



Release Notice

This is the March 2018 release of the C-NavDongleCheck Users Manual.

Revision History

3	03/20/2018	Updated for new domain	C. Thompson
2	03/21/2016	Update for OII standards	C. Thompson
1	05/09/2013	Initial release	C. Thompson
Revision	Date	Description	Author

Trademarks

The Oceaneering logo is a trademark of Oceaneering International, Inc. *C-Nav3050*, *C-Tides*, and *C-Monitor* are trademarks of Oceaneering International, Inc. All other brand names are trademarks of their respective holders.

Disclaimer of Warranty

EXCEPT AS INDICATED IN "LIMITED WARRANTY" HEREIN, OCEANEERING INTERNATIONAL, INC. SOFTWARE, FIRMWARE AND DOCUMENTATION ARE PROVIDED "AS IS" AND WITHOUT EXPRESSED OR LIMITED WARRANTY OF ANY KIND BY EITHER OCEANEERING INTERNATIONAL, INC., OR ANYONE WHO HAS BEEN INVOLVED IN ITS CREATION, PRODUCTION, OR DISTRIBUTION INCLUDING BUT NOT LIMITED TO THE IMPLIED WARRANTIES OF MERCHANTABILITY AND FITNESS FOR A PARTICULAR PURPOSE. THE ENTIRE RISK, AS TO THE QUALITY AND PERFORMANCE OF THE OCEANEERING INTERNATIONAL, INC. HARDWARE, SOFTWARE, FIRMWARE AND DOCUMENTATION, IS WITH YOU. SOME STATES DO NOT ALLOW THE EXCLUSION OF IMPLIED WARRANTIES, SO THE ABOVE EXCLUSION MAY NOT APPLY TO YOU.

Limitation of Liability

IN NO EVENT WILL OCEANEERING INTERNATIONAL, INC., OR ANY PERSON INVOLVED IN THE CREATION, PRODUCTION, OR DISTRIBUTION OF THE OCEANEERING INTERNATIONAL, INC. SOFTWARE, HARDWARE, FIRMWARE AND DOCUMENTATION BE LIABLE TO YOU ON ACCOUNT OF ANY CLAIM FOR ANY DAMAGES, INCLUDING ANY LOST PROFITS, LOST SAVINGS, OR OTHER SPECIAL, INCIDENTAL, CONSEQUENTIAL, OR EXEMPLARY DAMAGES, INCLUDING BUT NOT LIMITED TO ANY DAMAGES ASSESSED AGAINST OR PAID BY YOU TO ANY THIRD PARTY, ARISING OUT OF THE USE, LIABILITY TO USE, QUALITY OR PERFORMANCE OF SUCH OCEANEERING INTERNATIONAL, INC. SOFTWARE, HARDWARE, AND DOCUMENTATION, EVEN IF OCEANEERING INTERNATIONAL, INC., OR ANY SUCH PERSON OR ENTITY HAS BEEN ADVISED OF THE POSSIBILITY OF DAMAGES, OR FOR ANY CLAIM BY ANY OTHER PARTY. SOME STATES DO NOT ALLOW THE LIMITATION OR EXCLUSION OF LIABILITY FOR INCIDENTAL OR CONSEQUENTIAL DAMAGES SO, THE ABOVE LIMITATIONS MAY NOT APPLY TO YOU.

Table of Contents

C-NavDongleCheck Users Manual	1
Trademarks	3
Disclaimer of Warranty	3
Limitation of Liability	3
Table of Contents	4
Manual Conventions	5
Section 1 - C-Nav Dongle Introduction	6
Section 2 - Sentinel Dongle Driver Installation	7
Section 3 - Installing C-NavDongleCheck	8
Section 4 - Running C-NavDongleCheck	12

Manual Conventions

Arial font is used for plain text in this document.

Arial italic font is used for settings names.

“Arial quoted” font is used for settings values.

Arial Bold font is used for button names.

Arial Bold Italic font is used for menu items.

Arial Blue font is used for cross-references.

Arial Blue Underline font is used for hyperlinks.

Arial red italic is used for typed commands.

Arial Bold font size 10 is used for captions.

ARIAL BLACK ALL-CAPS font is used for port connection names.



This symbol means Reader Be Careful. It indicates a caution, care, and/or safety situation. The user might do something that could result in equipment damage or loss of data.



This symbol means Danger. You are in a situation that could cause bodily injury. Before you work on any equipment, be aware of the hazards involved with electrical and RF circuitry and be familiar with standard practices for preventing accidents.

Important notes are displayed in shaded text boxes.

Please note:

Such note boxes display important information that should not be ignored.

Simple file content is displayed in Courier New Black font in a text box.

```
#Sample File  
Version 0.1
```

Section 1 - C-Nav Dongle Introduction

A C-Nav Dongle is a software protection key provided with the purchase of the **Oceaneering[®] C-Monitor[®]** software application, **Oceaneering[®] C-Scape** software application, and **Oceaneering[®] C-Tides[®]** worldwide tidal data application and is used to prevent unauthorized access to the application.

The C-NavDongleCheck application will scan for C-Nav Dongles attached to the PC and report the compatibility.

		
USB Dongle	USB Dongle	Parallel Port Dongle

Warning:

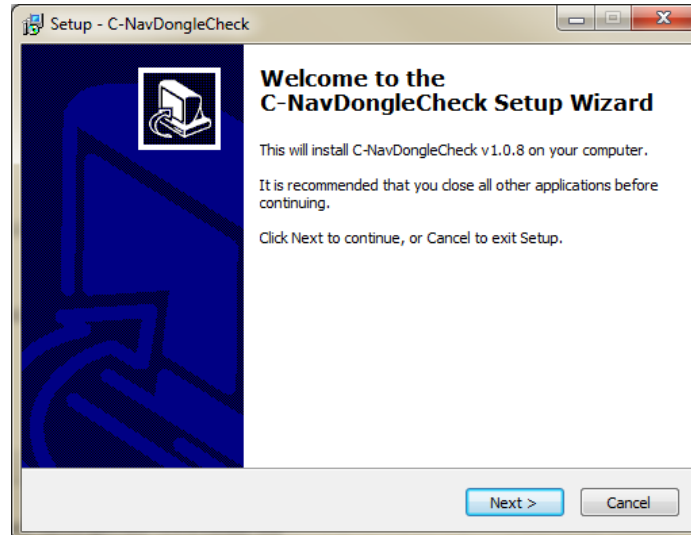
The C-Monitor[®] software application should not be updated to version 6.1.x or higher without checking the C-Nav Dongle compatibility first. An incompatible C-Nav Dongle will not allow the C-Monitor[®] software application to function after the update.

Section 2 - Sentinel Dongle Driver Installation

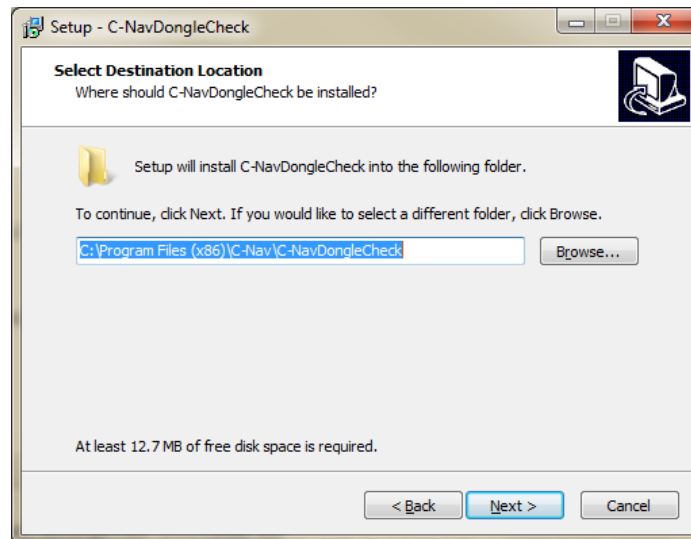
The Sentinel Driver must be installed before running the application. For instructions on how to install the Sentinel Driver, please see the document Sentinel Driver Installation Manual available from oceanengineering.com/positioning-solutions/customer-access-and-resources/.

Section 3 - Installing C-NavDongleCheck

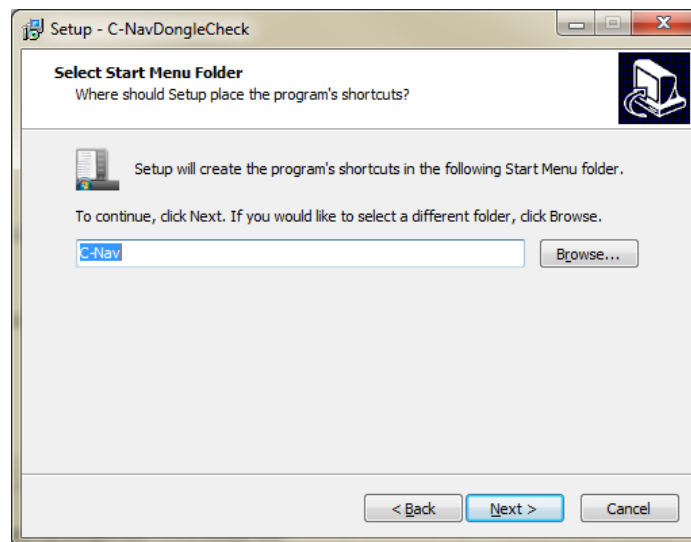
1. Download the C-NavDongleCheck application from oceanengineering.com/positioning-solutions/customer-access-and-resources/.
2. Double click on the C-NavDongleCheck vX.Y.Z Installer.exe to start the installation wizard.
3. Ensure that all Windows programs are closed then press **Next >** to proceed.



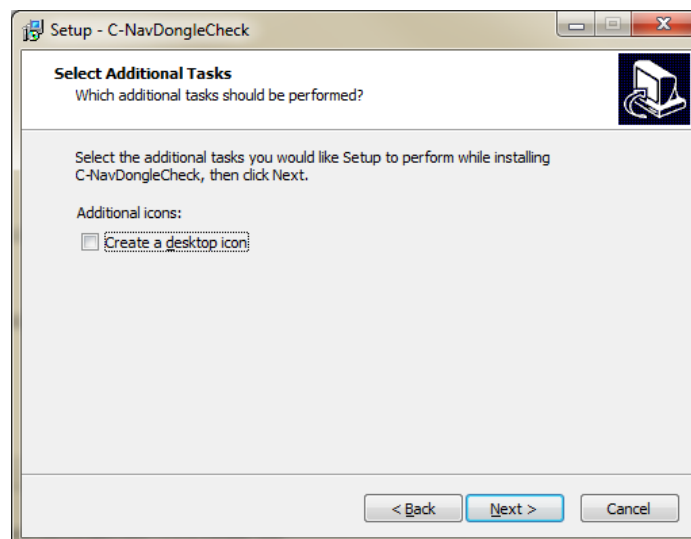
1. Choose the Destination Location then select **Next >** to proceed. The default installation location is:
Windows Vista and higher:
C:\Program Files (x86)\C-Nav\C-NavDongleCheck
Windows XP:
C:\Program Files\C-Nav\C-NavDongleCheck



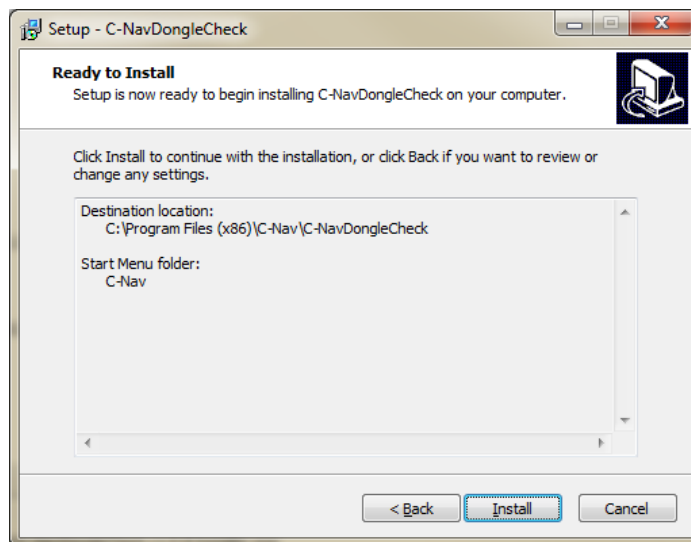
2. Select the Start Menu folder to install the C-NavDongleCheck shortcut. The default is **C-Nav**.



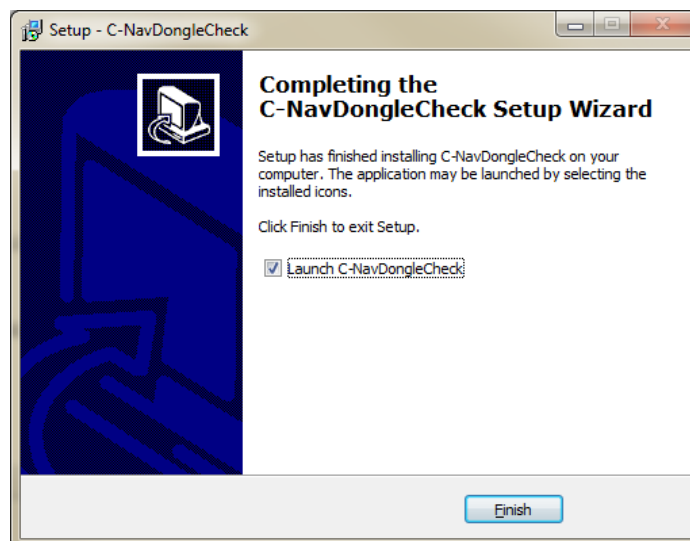
3. Optionally a shortcut can be placed on the Desktop by checking the *Create a desktop icon* checkbox.



4. Confirm the settings are correct and press **Install** to begin the installation.

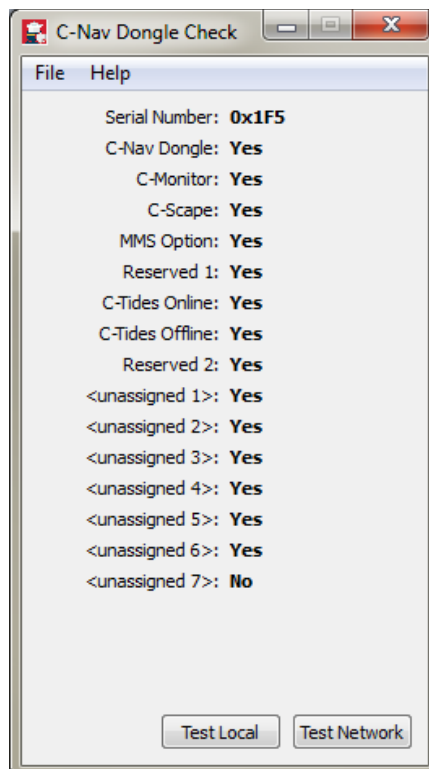


5. If you would like to launch C-NavDongleCheck immediately, leave the *Launch C-NavDongleCheck* setting checked. Select **Finish** to complete the installation.



Section 4 - Running C-NavDongleCheck

1. Double click on the C-NavDongleCheck.exe file to run the application.
2. Press the **Test Local** button.
3. C-NavDongleCheck will report the Dongle status:



4. If running the C-NavDongleCheck to ensure that the C-Monitor® software application will run:
 - a. If *C-Nav Dongle*: reports "No" do not proceed with the update. Contact C-Nav Support for further instructions.
 - b. If *C-Monitor*: reports "No" do not proceed with the update. Contact C-Nav Support for further instructions.
 - c. If *C-Monitor*: reports "Yes" it is safe to continue with the update.