

C-NavTM

Sentinel Driver Installation Manual

Revision 2

Revision Date: March 20, 2018

C-Nav Positioning Solutions
730 E. Kaliste Saloom Road
Lafayette, LA 70508 U.S.A.
oceanengineering.com/cnav



Release Notice

This is the March 2018 release of the Sentinel Driver Installation Manual.

Revision History

2	03/20/2018	Updated for new domain	C. Thompson
1	04/02/2013	Initial release	C. Thompson
Revision	Date	Description	Author

Trademarks

The C-Nav logo is a trademark of C & C Technologies, Inc.
C-Nav, C-Monitor, and C-Tides are trademarks of C & C Technologies, Inc.
All other brand names are trademarks of their respective holders.

Disclaimer of Warranty

EXCEPT AS INDICATED IN "LIMITED WARRANTY" HEREIN, C & C TECHNOLOGIES, SOFTWARE, FIRMWARE AND DOCUMENTATION ARE PROVIDED "AS IS" AND WITHOUT EXPRESSED OR LIMITED WARRANTY OF ANY KIND BY EITHER C & C TECHNOLOGIES, INC., OR ANYONE WHO HAS BEEN INVOLVED IN ITS CREATION, PRODUCTION, OR DISTRIBUTION INCLUDING BUT NOT LIMITED TO THE IMPLIED WARRANTIES OF MERCHANTABILITY AND FITNESS FOR A PARTICULAR PURPOSE. THE ENTIRE RISK, AS TO THE QUALITY AND PERFORMANCE OF THE C & C TECHNOLOGIES HARDWARE, SOFTWARE, FIRMWARE AND DOCUMENTATION, IS WITH YOU. SOME STATES DO NOT ALLOW THE EXCLUSION OF IMPLIED WARRANTIES, SO THE ABOVE EXCLUSION MAY NOT APPLY TO YOU.

Limitation of Liability

IN NO EVENT WILL C & C TECHNOLOGIES, INC., OR ANY PERSON INVOLVED IN THE CREATION, PRODUCTION, OR DISTRIBUTION OF THE C & C TECHNOLOGIES SOFTWARE, HARDWARE, FIRMWARE AND DOCUMENTATION BE LIABLE TO YOU ON ACCOUNT OF ANY CLAIM FOR ANY DAMAGES, INCLUDING ANY LOST PROFITS, LOST SAVINGS, OR OTHER SPECIAL, INCIDENTAL, CONSEQUENTIAL, OR EXEMPLARY DAMAGES, INCLUDING BUT NOT LIMITED TO ANY DAMAGES ASSESSED AGAINST OR PAID BY YOU TO ANY THIRD PARTY, ARISING OUT OF THE USE, LIABILITY TO USE, QUALITY OR PERFORMANCE OF SUCH C & C TECHNOLOGIES' SOFTWARE, HARDWARE, AND DOCUMENTATION, EVEN IF C & C TECHNOLOGIES, INC., OR ANY SUCH PERSON OR ENTITY HAS BEEN ADVISED OF THE POSSIBILITY OF DAMAGES, OR FOR ANY CLAIM BY ANY OTHER PARTY. SOME STATES DO NOT ALLOW THE LIMITATION OR EXCLUSION OF LIABILITY FOR INCIDENTAL OR CONSEQUENTIAL DAMAGES SO, THE ABOVE LIMITATIONS MAY NOT APPLY TO YOU.

Table of Contents

Sentinel Driver Installation Manual.....	1
Table of Contents.....	4
Manual Organization.....	5
Manual Conventions.....	6
Section 1 - Sentinel Driver Installation.....	7

Manual Organization

This is a short tutorial explaining the how to install the Sentinel driver that is used by the **Oceaneering[®] C-Monitor[®]** software application, **Oceaneering[®] C-Scape** software application, and **Oceaneering[®] C-Tides[®]** worldwide tidal data application. Sections are organized in a manner that facilitates quick operator orientation.

The first section, [Section 1 - Sentinel Driver Installation](#) (Page 7), details how to install the Sentinel Dongle driver.

Manual Conventions

Arial font is used for plain text in this document.

Arial italic font is used for settings names.

“Arial quoted” font is used for settings values.

Arial Bold font is used for button names.

Arial Bold Italic font is used for menu items.

Arial Blue font is used for cross-references.

Arial Blue Underline font is used for hyperlinks.

Arial red italic is used for typed commands.

Arial Bold font size 10 is used for captions.

ARIAL BLACK ALL-CAPS font is used for port connection names.



This symbol means Reader Be Careful. It indicates a caution, care, and/or safety situation. The user might do something that could result in equipment damage or loss of data.



This symbol means Danger. You are in a situation that could cause bodily injury. Before you work on any equipment, be aware of the hazards involved with electrical and RF circuitry and be familiar with standard practices for preventing accidents.

Important notes are displayed in shaded text boxes.

Please note:

Such note boxes display important information that should not be ignored.

Simple file content is displayed in Courier New Black font in a text box.

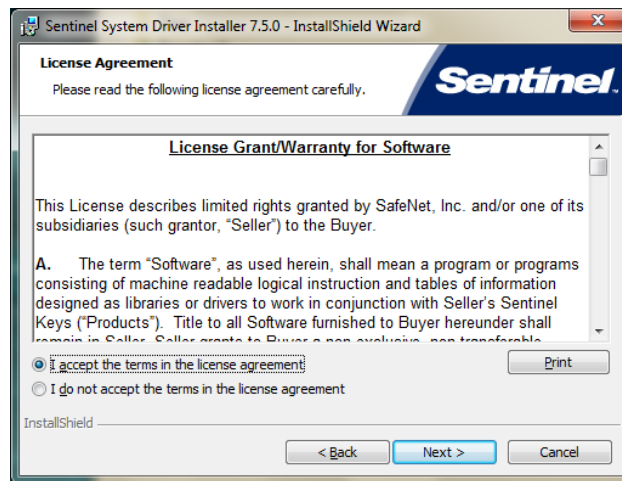
```
#Sample File  
Version 0.1
```

Section 1 - Sentinel Driver Installation

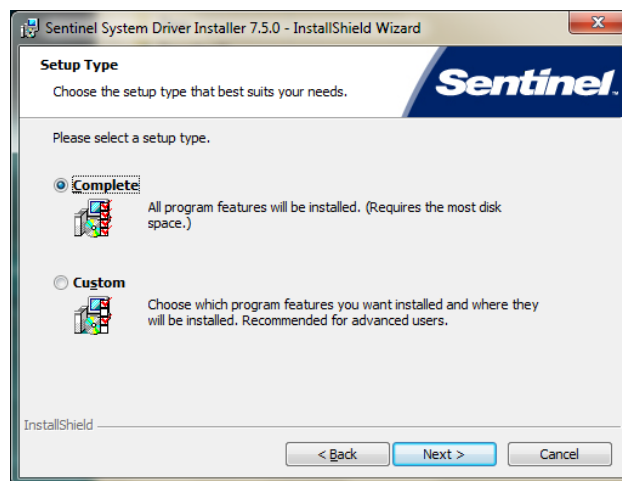
1. Download the Sentinel Dongle Driver from oceanengineering.com/positioning-solutions/customer-access-and-resources/.
2. Extract the contents of the zip file to a new folder on your hard drive.
3. Double click on the Sentinel System Driver Installer 7.5.0.exe file to start the installation wizard.
4. Ensure that all Windows programs are closed then select **Next >** to proceed.



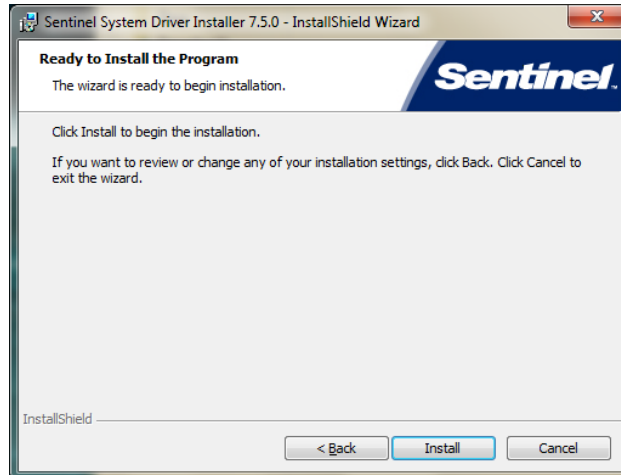
5. Read the License Agreement then select *I Accept the terms in the license agreement*. Select **Next >** to continue the installation.



6. Choose *Complete* installation and select **Next >** to continue.



7. Select **Install** to start the installation.



8. Select **Finish** to complete the installation

