

C-NavTM

CM145 Software Update Procedure

Revision 2

Revision Date: March 20, 2018

C-Nav Positioning Solutions
730 E. Kaliste Saloom Road
Lafayette, LA 70508 U.S.A.

oceaneering.com/cnav



Release Notice

This is the March 2018 release of the CM145 Software Update Procedure manual.

Revision History

2	03/20/2018	Updated for new domain	C. Thompson
1	02/28/2014	Initial document creation	C. Thompson
Revision	Date	Description	Author

Trademarks

The Oceaneering logo is a trademark of Oceaneering International, Inc. *C-Nav* and *C-Nav3050* are trademarks of Oceaneering International, Inc. All other brand names are trademarks of their respective holders.

Disclaimer of Warranty

EXCEPT AS INDICATED IN "LIMITED WARRANTY" HEREIN, OCEANEERING INTERNATIONAL, INC. SOFTWARE, FIRMWARE AND DOCUMENTATION ARE PROVIDED "AS IS" AND WITHOUT EXPRESSED OR LIMITED WARRANTY OF ANY KIND BY EITHER OCEANEERING INTERNATIONAL, INC., OR ANYONE WHO HAS BEEN INVOLVED IN ITS CREATION, PRODUCTION, OR DISTRIBUTION INCLUDING BUT NOT LIMITED TO THE IMPLIED WARRANTIES OF MERCHANTABILITY AND FITNESS FOR A PARTICULAR PURPOSE. THE ENTIRE RISK, AS TO THE QUALITY AND PERFORMANCE OF THE OCEANEERING INTERNATIONAL, INC. HARDWARE, SOFTWARE, FIRMWARE AND DOCUMENTATION, IS WITH YOU. SOME STATES DO NOT ALLOW THE EXCLUSION OF IMPLIED WARRANTIES, SO THE ABOVE EXCLUSION MAY NOT APPLY TO YOU.

Limitation of Liability

IN NO EVENT WILL OCEANEERING INTERNATIONAL, INC., OR ANY PERSON INVOLVED IN THE CREATION, PRODUCTION, OR DISTRIBUTION OF THE OCEANEERING INTERNATIONAL, INC. SOFTWARE, HARDWARE, FIRMWARE AND DOCUMENTATION BE LIABLE TO YOU ON ACCOUNT OF ANY CLAIM FOR ANY DAMAGES, INCLUDING ANY LOST PROFITS, LOST SAVINGS, OR OTHER SPECIAL, INCIDENTAL, CONSEQUENTIAL, OR EXEMPLARY DAMAGES, INCLUDING BUT NOT LIMITED TO ANY DAMAGES ASSESSED AGAINST OR PAID BY YOU TO ANY THIRD PARTY, ARISING OUT OF THE USE, LIABILITY TO USE, QUALITY OR PERFORMANCE OF SUCH OCEANEERING INTERNATIONAL, INC. SOFTWARE, HARDWARE, AND DOCUMENTATION, EVEN IF OCEANEERING INTERNATIONAL, INC., OR ANY SUCH PERSON OR ENTITY HAS BEEN ADVISED OF THE POSSIBILITY OF DAMAGES, OR FOR ANY CLAIM BY ANY OTHER PARTY. SOME STATES DO NOT ALLOW THE LIMITATION OR EXCLUSION OF LIABILITY FOR INCIDENTAL OR CONSEQUENTIAL DAMAGES SO, THE ABOVE LIMITATIONS MAY NOT APPLY TO YOU.

Table of Contents

CM145 Software Update Procedure	1
Trademarks	3
Disclaimer of Warranty	3
Limitation of Liability	3
Table of Contents.....	4
Manual Organization	5
Manual Conventions.....	6
Section 1 - Overview.....	7
Introduction	7
Section 2 - Required Items	8
Section 3 - Software Update	9

Manual Organization

The purpose of this document is to provide instruction on the installation of software updates for the CM145 touch-screen display unit using a USB drive. Sections are organized in a manner that facilitates quick operator orientation.

[Section 1 - Overview \(Page 7\)](#) gives a brief overview of the purpose of this document.

[Section 2 - Required Items \(Page 8\)](#) lists the items required to perform the software update.

[Section 3 - Software Update \(Page 9\)](#) describes a normal software update procedure.

Manual Conventions

Arial font is used for plain text in this document.

Arial italic font is used for settings names.

“Arial quoted” font is used for settings values.

Arial Bold font is used for button names.

Arial Bold Italic font is used for menu items.

Arial Blue font is used for cross-references.

Arial Blue Underline font is used for hyperlinks.

Arial red italic is used for typed commands.

Arial Bold font size 10 is used for captions.

ARIAL BLACK ALL-CAPS font is used for port connection names.



This symbol means Reader Be Careful. It indicates a caution, care, and/or safety situation. The user might do something that could result in equipment damage or loss of data.



This symbol means Danger. You are in a situation that could cause bodily injury. Before you work on any equipment, be aware of the hazards involved with electrical and RF circuitry and be familiar with standard practices for preventing accidents.

Important notes are displayed in shaded text boxes.

Please note:

Such note boxes display important information that should not be ignored.

Simple file content is displayed in Courier New Black font in a text box.

```
#Sample File  
Version 0.1
```

Section 1 - Overview

Introduction

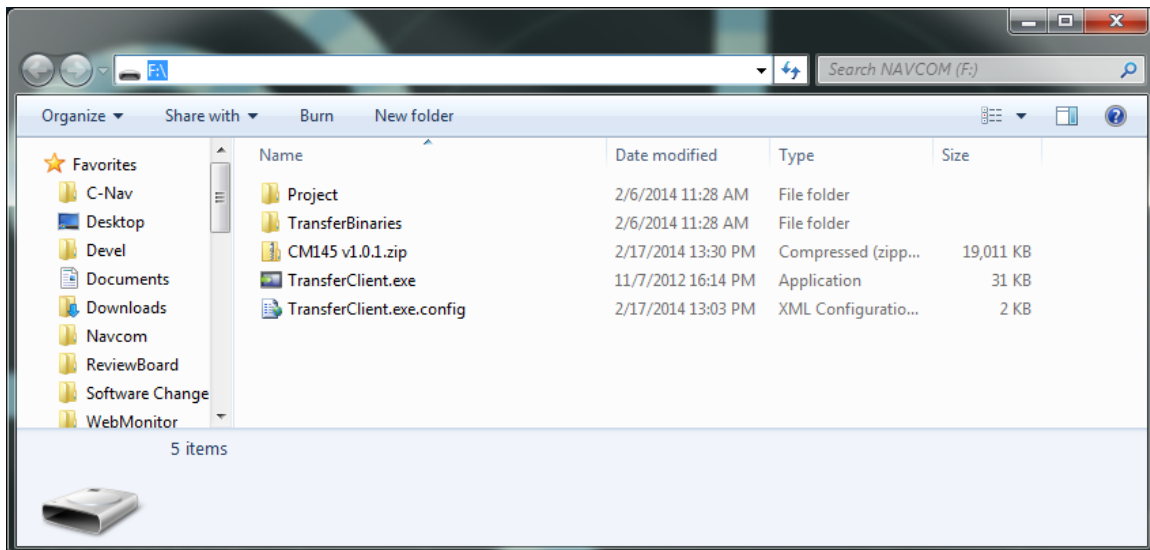
The purpose of this document is to provide instruction on the installation of software updates for the CM145 touch-screen display unit using a USB Drive. To obtain copies of C-Nav software updates, contact C-Nav Support at cnavsupport@oceanengineering.com.

Section 2 - Required Items

- CM145 Display Unit
- USB drive (>100 MB) formatted as FAT (not NTFS)
- Software Update zip file, available by contacting [C-Nav Support](#)
- A Windows PC

Section 3 - Software Update

1. Attach a USB drive to the Windows PC.
2. Contact [C-Nav Support](#) to obtain the latest software update for the CM145 display unit. Download the zip file to the top-level folder of the USB drive.
3. Unzip the contents of the zip file to the top-level folder of the USB drive. When completed, there will be two folders, two files, and the zip file on the top-level folder of the USB drive.



4. Ensure the computer has finished writing to the USB drive (use the Safely Remove Hardware tray icon if necessary) then remove the USB drive from the computer.
5. Power off the CM145 via the front panel ON/OFF switch.
6. Remove the cover of the CM145 by removing the 6 screws on the top of the CM145 and the 1 screw on the front panel of the CM145 with a Phillips head screwdriver.
7. Open the side panel of the CM145 display unit and insert the USB drive.
8. Power on the CM145 via the front panel ON/OFF switch.

9. During boot, a prompt will appear asking “Copy project from USB memory?” Press the **Yes** button to continue.

Please note:

If the CM145 display unit is already running the latest software, this prompt will not appear and the CM145 display unit will simply boot normally.

10. A second prompt will then appear asking to “Backup existing project?” Press the **No** button.

11. The CM145 display unit will then commence the update process.

Warning:

DO NOT disconnect the USB drive during the installation process.

12. Once the update is completed, the CM145 display unit will automatically boot and start operating.
13. Remove the USB drive and close the side panel. Place the CM145 cover back onto the CM145 and replace the 7 screws, securing the cover tightly.
14. The CM145 display unit software update is complete.

