

## How to determine the GPS engine type in my C-Nav2050 receiver?

The C-Nav2050 series of GPS receivers can be equipped with either NCT-2100D or NCT-2000D GPS engines. Typically, receivers with a tag serial number of 5000 or greater will have the NCT-2100D engine and receivers with a tag serial number of less than 5000 will have the NCT-2000D engine. However, the receiver may have a tag serial number less than 5000 and the NCT-2100D engine if a recent hardware upgrade or repair has taken place.

To correctly identify the GPS engine type, reference your receiver's internal Digital Card serial number to the chart below.

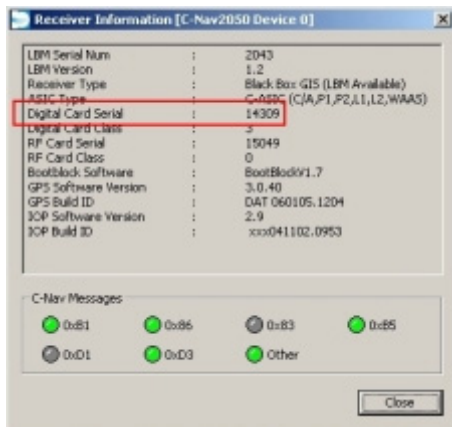
Digital Card Serial Number	Receiver Tag Serial Number	C-Nav2050 GPS Engine Type
40000 or greater	5000 or greater	NCT-2100D
less than 40000	Less than 5000*	NCT-2000D

\*May have tag serial number less than 5000 and the NCT-2100D Engine.

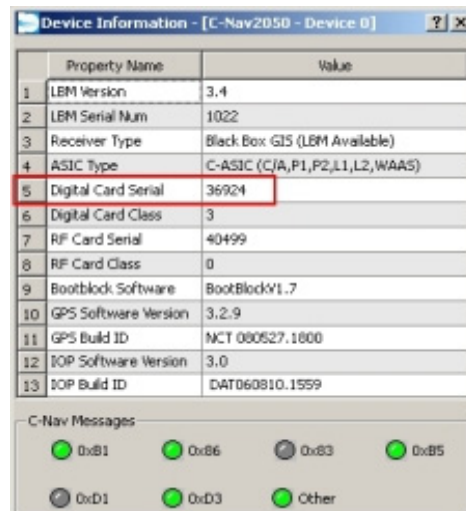
Instructions for locating your C-Nav2050 receiver's Digital Card serial number are noted below.

### C-Monitor/C-Setup

While connected to the receiver, select *View -> Receiver Information* (C-Monitor/C-Setup version 3.2.x) or *View -> Receiver Information* (C-Monitor/C-Setup version 4.0.x).



C-Monitor/C-Setup Version 3.2.x - Receiver Information



C-Monitor/C-Setup Version 4.0.x - Receiver Information

### C-NaviGator

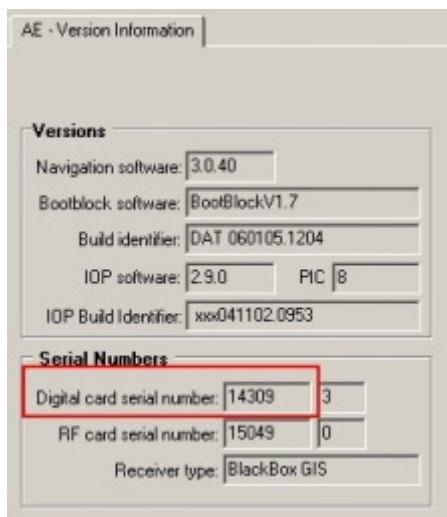
While connected to the receiver, select *Menu* -> *Settings* -> *C-Nav2050* -> *Receiver Information*.



C-NaviGator - Receiver Information

### StarUtil

While connected to the receiver, select *View* -> *AE-Version Information*.



StarUtil - AE-Version Information