



**C-Nav1010 Firmware Release Notice
Version 2.2.12**

Revision:
Issue Date: 2/23/2012

**C-Nav1010 Receivers Only
C-Nav1010M and C-Nav1010R Models**

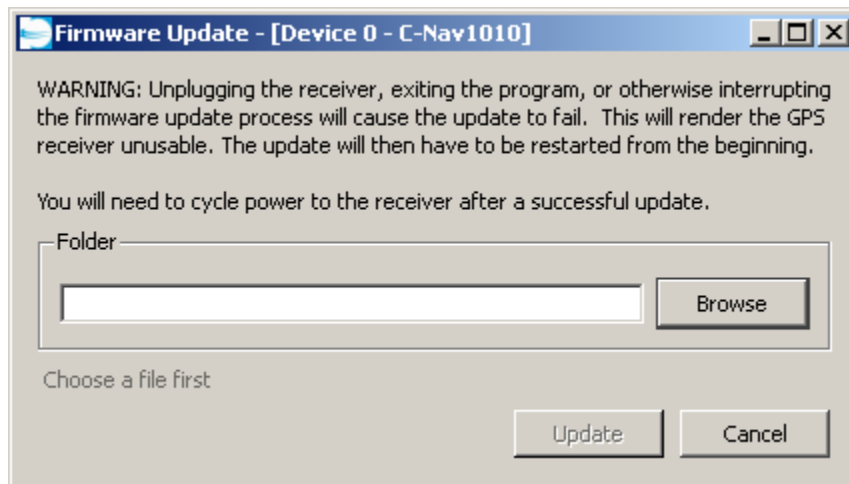
- ❑ **This firmware build will only function in C-Nav1010 receivers containing the SF-2110 GPS Engine.**
- ❑ **Important** – Update the receiver with a consistent ensemble of software and use only the latest versions of C-Setup, C-Monitor, or C-NaviGator software to perform the update.
- ❑ **The C-Nav1010 receiver allows software installation through either communications port. Power cycle the receiver after installing the software.**
- ❑ **Always install the new firmware with the antenna connected and in an area where the receiver has the ability to track satellites.**

Software Changes/Improvements

- ❑ This software release provides the following changes, improvements, and features incorporated since the previous formal release of v2.2.10.
 - Updates for C-Nav Correction Satellite changes.

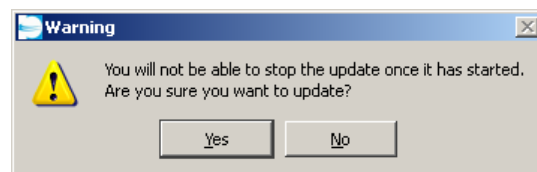
Firmware Update Instructions with C-Setup/C-Monitor

- Always ensure the latest C-Setup or C-Monitor software is installed before performing a receiver firmware update.
 - C-Setup/C-Monitor must be communicating with the receiver to perform the firmware update.
 - **Always install the new firmware with the antenna connected and in an area where the receiver has the ability to track satellites.**
 - Do not interrupt or power off the receiver during the firmware update process. The firmware update process will take about 10 minutes.
1. Download the C-Nav1010 receiver firmware zip file from the link provided by C-Nav Support.
 2. Extract the complete contents of the zip file to a folder on the local hard drive.
 3. Access the Firmware Update dialog. Select **Device >> Firmware Update**.



Firmware Update Dialog

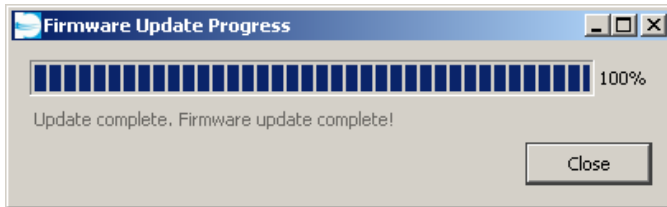
4. Using the Browse button, locate and open the C-Nav1010 firmware update file saved to the local hard drive in Step 2.
5. A warning dialog will appear. Select Yes to continue.



6. The Firmware Update Progress dialog will now appear and the update will begin.



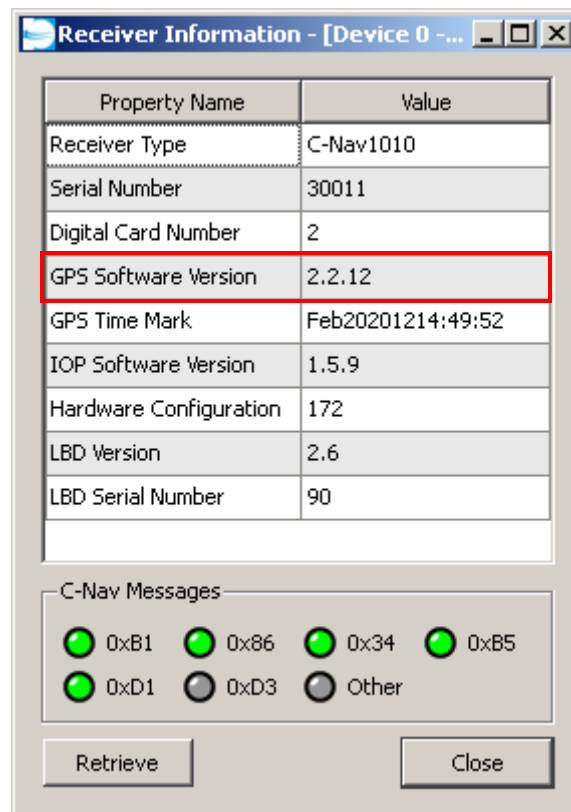
7. The update will take about 10 minutes to complete.



8. Once the progress bar reaches 100%, the firmware update is complete.

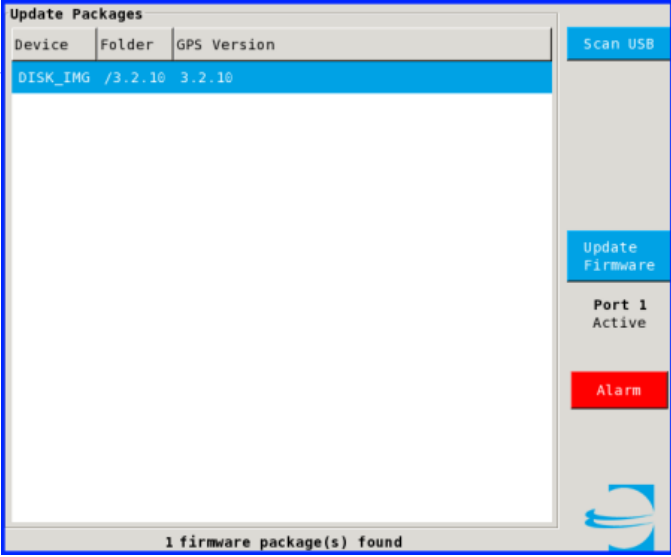
9. **It is important to manually cycle power on the GPS receiver after completing the firmware update.**

10. Verify the receiver reports the correct firmware version. Select **View >> Receiver Information**. Ensure that GPS Software Version (Line 4) is consistent with the newly installed firmware ensemble.



C-Nav1010 Firmware Update Instructions with C-NaviGator

1. Download the C-Nav1010 receiver firmware zip file from the link provided by C-Nav Support.
2. Extract the complete contents of the zip file to a USB memory stick. Insert the memory stick into an available USB port on the C-NaviGator.
3. Access the Firmware Update dialog. Select **Menu >> Settings >> C-Nav1010 >> Firmware Update**.



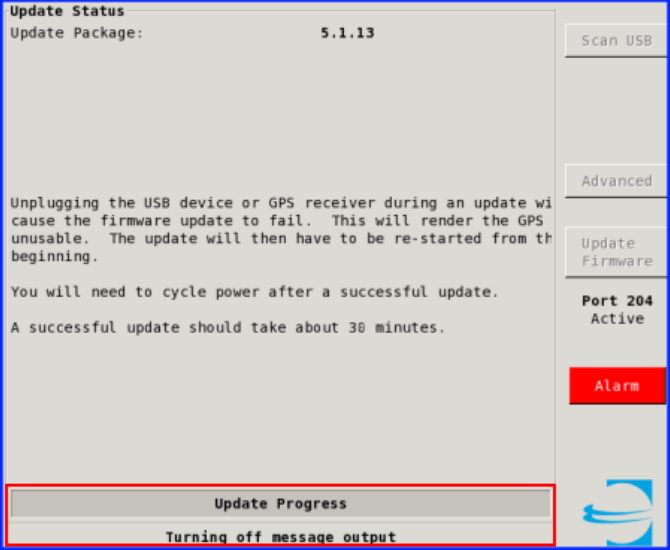
Available firmware update files on the USB media are listed

Select Scan USB to search the USB media for available firmware updates

Selecting the Update Firmware button begins the update process

C-Nav1010 Firmware Update Dialog

4. Select the Scan USB button to search the USB media for available firmware updates.
5. Highlight the appropriate firmware package from the list if multiple exist.
6. Select the Update Firmware button to begin the update process.
7. The Firmware Update Status Dialog will now appear.



Update Progress bar and status messages

Firmware Update Status Dialog

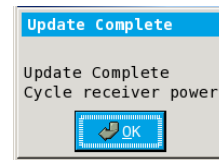


C-Nav1010 Firmware Release Notice Version 2.2.12

Revision:
Issue Date: 2/23/2012

8. The firmware update will now begin. The process should take about 10 minutes. Unplugging the USB device or GPS receiver during an update will cause the firmware update to fail. This will render the GPS unusable.

9. A dialog box will appear once the update is complete. Select OK to acknowledge.



10. **It is important to manually cycle power on the GPS receiver after completing the firmware update.** It is not necessary to cycle power on the C-NaviGator.

11. Verify the firmware versions reported by the receiver. Select **Menu >> Settings >> C-Nav1010 >> Receiver Information**. The Firmware Versions section lists the newly installed version for each receiver component. Ensure the reported versions are consistent with the newly installed firmware ensemble.

12. The firmware update process is now complete.