

SDSV *Ocean Patriot*

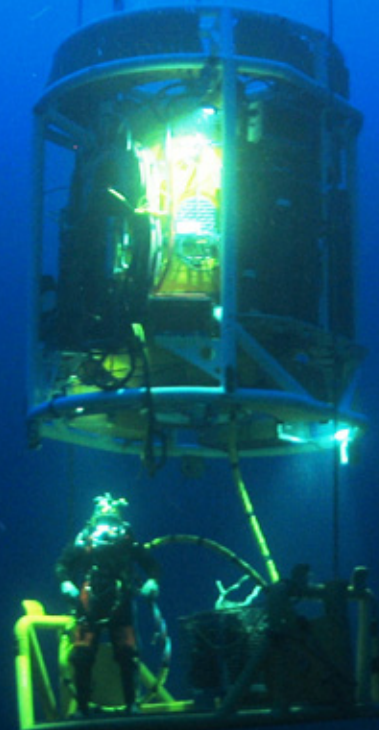
240 ft DP-2 Saturation Diving Support Vessel



Project Capabilities:

- Inspection:
 - Platform & Rig Inspection
 - Pipeline & Riser Inspection
- Maintenance:
 - Pipeline Riser Installation
 - Riser Guards
 - Boat Landings & Bumpers
 - Anode Retrofit
- Platform Jacket Repair:
 - Dry Habitat Welding Repair
 - Wet Welding Repairs
 - Grouting Repairs
 - Mechanical & Stress Grouted Clamp Repairs
- Pipeline Work:
 - Mechanical Hot Tap Installation
 - Pipeline End Connectors & Subsea Repairs
 - Pipeline Re-Route & Subsea Tie-In
 - Pipeline Pigging / Flushing & Abandonment
 - Pipeline Exposure / Spanning Remediation
- Underwater Salvage Operations
- Platform & Stub Removal
- ROV & Diving Support Services

Working 3-Man Bell



OCEANEERING®

www.oceaneering.com

SDSV *Ocean Patriot* Specifications

Dimensions

Length:	240 ft
Beam:	54 ft
Molded Depth:	20 ft
Maximum Draft:	15.5 ft
Open Project Deck:	65 ft x 50 ft

Weights

Deck Cargo:	485 LT
Deck Load Strength:	1,000 lb / ft ²

Power & Propulsion

Total Available:	5,676 hp
Azimuth Stern Thrusters:	2 x 1,920 hp
Bow Tunnel Thrusters:	2 x 918 hp

Capacities

Fuel:	149,400 gal
Ballast:	518,000 gal
Potable Water:	46,400 gal

Accommodations

Total Accommodations:	52
Crew	16
Offshore Workers	36

Lifting Capacity

40 T Knuckle Boom Crane	40 T at 20 ft
	8 T at 67 ft Single Part
Working Depth	1,000 ft

Dynamic Positioning

- Converteam DP-2

Moonpool - Baffled

- Bell Launch & Recovery

Remotely Operated Vehicle

- Magnum® Work Class ROV
- Max Working Depth 4,500 fsw

Classification

- ABS for Unrestricted Service
- Maltese Cross A1
- Maltese Cross ABS

Communications System

- CapRock KU Band
- Marine VHF, SSB & GMDSS

Certifications / Flag

- USCG
- ABS-DP-2
- SOLAS
- Flag: USA (Jones Act Compliant)
- Homeport: Morgan City, LA
- Converted 2011

Saturation Diving System

- 12 Man 1,000 ft Sat Diving System, ABS Classed
- Hyperbaric Rescue Chamber & Launch System
- Life Support Equipment Built-In Below Deck
- 360,000 ft³ Gas Storage Built-In Below Deck
- Divers & System Gas Reclaim
- Dual Surface Diving LARS

