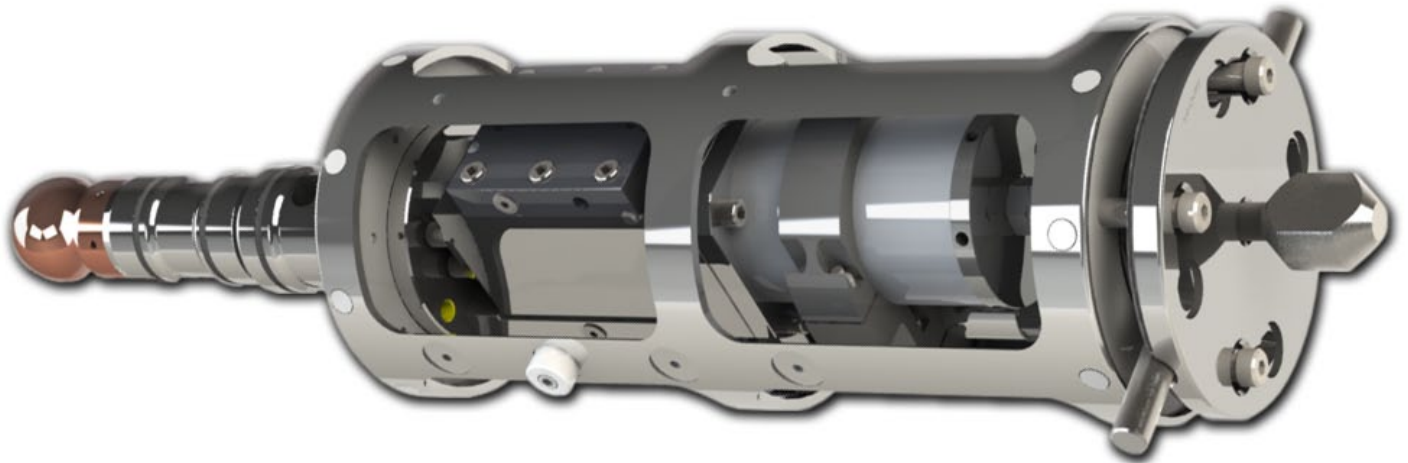


ROV RETRIEVABLE REGULATOR



The Oceaneering High-Flow, Regulator is designed and engineered to meet the increasing challenges of drilling in ultra-deep water. Constructed of contemporary, corrosion resistant alloys the field proven regulator is built for a long, reliable service life while operating in harsh subsea environments.

The regulator is manually set and capable of inlet pressures of up to 5,000 psi. It can be configured to an output range of 500 to 3,000 or 3,000 to 4,000 psi.

Equipped with a pressure balanced hydraulic interface and a nominal flow path of one and one half (1-1/2) inch, the regulator has a maximum flow rate of 240 gallons per minute (gpm).

The regulator can be deployed and retrieved using Remotely Operated Vehicles (ROVs). If the regulator needs service or replacement, the Lower Marine Riser Package (LMRP) does not need to be brought to the surface. ROV retrievability significantly reduces rig down time and enhances overall regulator serviceability.

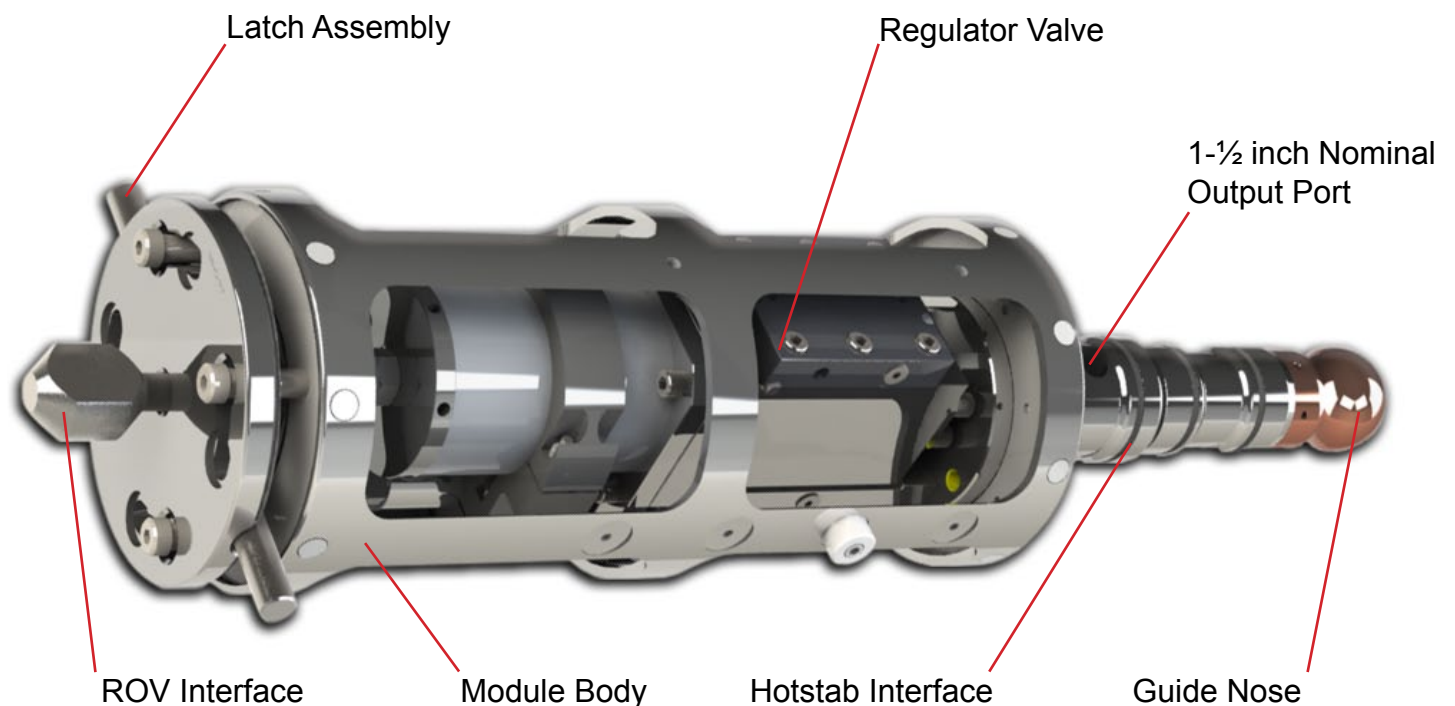
Key Features:

- Contemporary, Corrosion Resistant Alloys
- ROV Deployable and Retrievable
- 15,000 Feet of Seawater (fsw) Capable
- Minimizes Rig Down Time
- High Flow
- Pure Carbide Wetted Trim
- Easy Serviceability



ROV RETRIEVABLE REGULATOR SPECIFICATIONS

Overall Dimensions:	48 in x 12.2 in (OD) nominal (122 cm x 31 cm)
Weight:	270 lb (approx)
Flow Rate:	240 gpm
Flow Path:	1-½ in nominal
Maximum Water Depth:	15,000 fsw (4,572 m)
Maximum Inlet Pressure:	5,000 psi (345 bar)
Available Outlet Pressure Ranges:	1,500 - 3,000 psi / 3,000 - 4,000 psi (103 - 207 bar / 207 - 276 bar)
Temperature Range:	-4°F to 140°F (-20°C to 60°C)



Regulator Installation Sequence



Regulator Entering the Female Receiver (Bucket)

