

# SPECTRUM

The Spectrum represents a new generation of Oceaneering's fleet of light electric work class Remotely Operated Vehicle (ROV) with deepwater capabilities, up to 3,000 MSW.

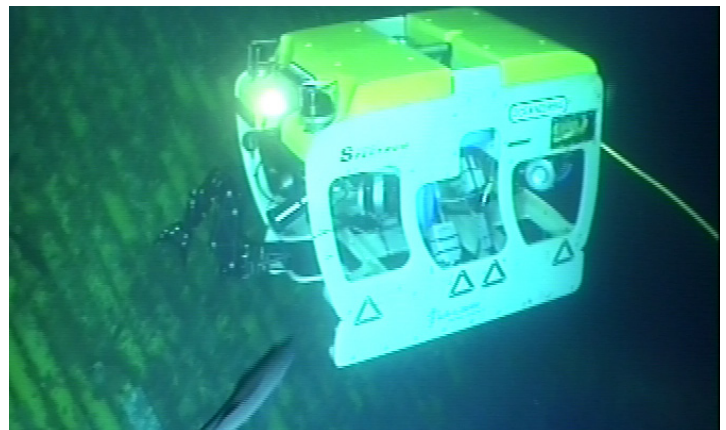
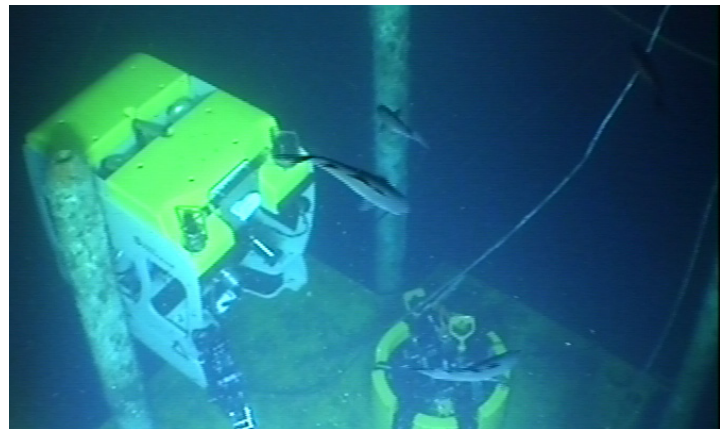
Reliable and easily maintained, the ROV provides in a small package, high thrust, cage-deployed system that is designed to accommodate light underwater intervention tasks in support of oil and gas drilling, construction, and production activities.

The Spectrum is based on the highly successful Super Mohawk light work class ROV, and is combined with Oceaneering's latest purpose built ROV control system, OPAC (Oceaneering Power and Control) which includes the latest technology and onboard diagnostics. The OPAC system is also directly interchangeable with the same system controlling other OII ROVs such as Magnum®, Millennium® and Maxximum® thus providing added redundancy.

The Spectrum ROV can be fitted with a skid deployed 5F manipulator, and is capable of operating light tools such as AX/VX ring tool, trash pump, CP probe, light survey sensors etc.

Oceaneering maintains a position as World wide market leader in providing deepwater work class ROVs to the oil and gas industry.

The Spectrum ROV is one several types of ROVs in the company's extensive fleet.



## Features

- Field Proven
- Ultra Reliable
- High-Powered
- Easily Maintained



# SPECTRUM SPECIFICATIONS

## Vehicle:

Length:	1,400 mm
Width:	900 mm
Height:	850 mm
Weight in air:	290 Kg
Frame:	Polypropylene
Fittings:	316 Stainless Steel
Depth Rating:	2,000 msw or 3,000 msw
Payload:	500 lb
Propulsion:	6off CTE02 440V AC 2 x Vectored 4 x Vertical

## Thrust:

Forward/Reverse	117Kgf
Lateral	88Kgf
Vertical	78Kgf
	Power Requirements: 480 VAC, 3 phase 60 Hz
Telemetry/Control:	OPAC with inbuilt diagnostics.
Lighting:	3 x 250 watts
Cameras:	1 x Wide angle Low Light, 1 x Color CCD 1 x Colour Zoom CCD 2 x B&W CCD aft
Navigation:	Tritech Seaking Sonar
Manipulators:	1 x 5 function Hydraulic

## Umbilical

- High-strength, armored opto-electro-mechanical
- 650 M length, in small footprint configuration.
- Additional payload for the deployment and
- Recovery of subsea equipment.
- Longer umbilical lengths, up to 2,000 m available.

## Subsea Deployment Cage

Length:	1,951mm
Width:	1,200mm
Height:	1,925 to 2,405mm
Weight (exc tether):	In Air: 1,100Kg In Water: 490Kg
HPU:	2,400 Watt Electric motor
Tether:	250m
Camera:	1 x B&W CCD
Lighting:	3 x 250 wattss

## Deployment System

Example:	Lidan Winch & Compact A-frame
Length:	4,555 mm
Width:	2,420 mm
Weight (w/cable):	12,000 Kg

## Control & Workshop Van

Lengths:	4,555 mm
Width:	2,420 mm
Height:	2,800 mm
Weights:	8,000 Kg
Constructed of:	Steel, A60 certified
Options include:	Stacking & Positive Pressure vans

