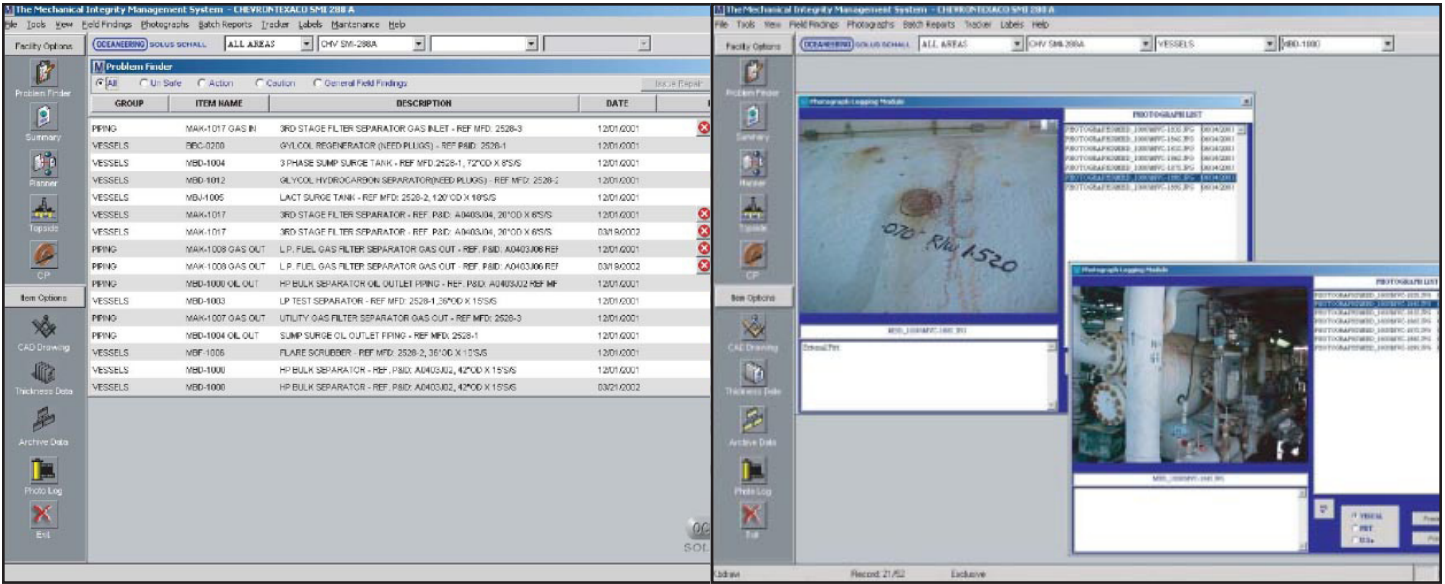


MECHANICAL INTEGRITY MANAGEMENT SYSTEM (MIMS)



The Mechanical Integrity Management System (MIMS) is fully customizable application, capable of integrating with any Inspection application or functioning as a complete management software and evaluation tool.

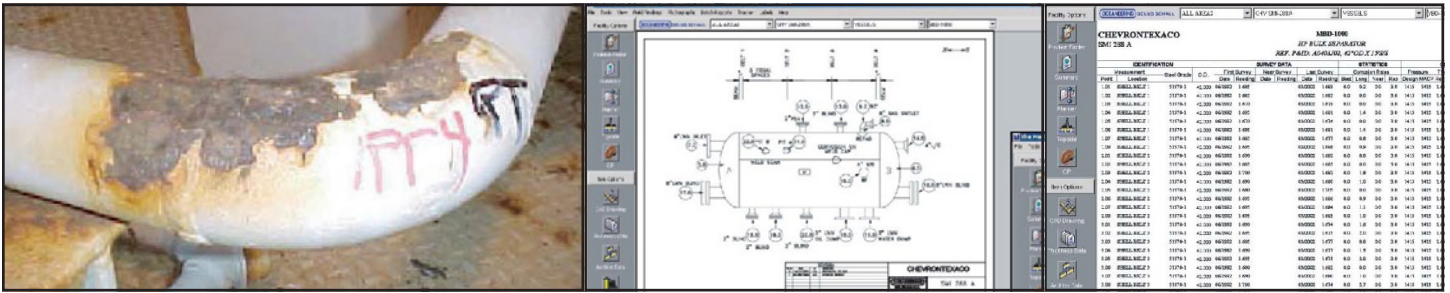
System Overview
The premise of the management systems is to allow for easy access of data to multiple users, while focusing their session on the pertinent data that they require. The system is capable of performing on LANs, WANs and Internet based.

- Inspection Modules**
- Erosion / Corrosion
 - Data Management
 - Photograph and video diary
 - Customized reporting
 - MOC Tracking
 - Repair tracking
 - Cathodic protection
 - Topside inspection
 - Advanced design
 - Visual inspection

- System Compatibility**
- UltraPipe
 - Pipe+
 - Customizable to meet customer needs



MECHANICAL INTEGRITY MANAGEMENT SYSTEM (MIMS)



System requirements

- Intel Pentium III or 4 processor
- Microsoft Windows 98, Windows 98 Second Edition, Windows Millennium Edition, Windows NT with Service Pack 6a, Windows 2000 with Service pack 2, or Windows XP
- 128 MB of RAM
- 50 MB of available hard disk space
- VGA Display of 1024C768 or higher

Less capable machines can run MIMS, but the results may be less than ideal. The use of additional memory or faster processors will directly improve performance and capacity

