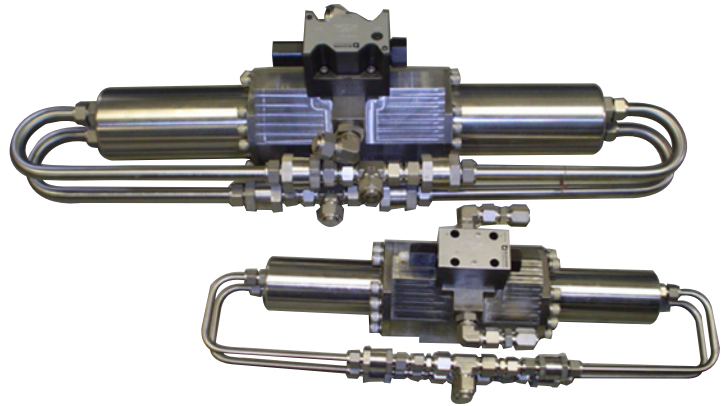
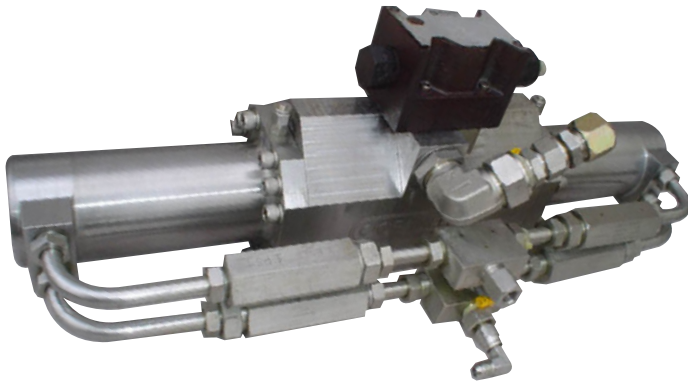


# DUPLEX PISTON PUMPS



Oceaneering has designed and built a range of Duplex Piston Pumps. These pumps are based upon a reciprocating piston intensifier with fixed displacement.

Hydraulically powered by the host Remotely Operated Vehicle (ROV), the pumps are available in two sizes, the 15 hp Series and the 50 hp Series, with a wide range of pressure ratios available in each series.

The pumps are the basis for multiple tooling applications, including subsea hydrotesting, hydrate remediation, and general fluid intervention. The pumps are not compatible with methanol. For methanol-compatible pumping, use the Duplex Plunger Pump.

- Manual / Piloted version available for fine control of discharge pressure when pressurizing small volumes
- Fluid Compatibility: Seawater, hydraulic fluids, control fluids (HW 525, 1443 etc)

## Standard 15 hp Series

- Hydraulic Supply: 3,000 psi @ up to 8 gpm
- Weight in Air: approx 40 lb
- Weight in Seawater: approx 30 lb

OI Part #	Input/Output Ratio	Max Output Pressure psi	Max Output Flow gpm
0025594	1.94:1	5,500	3.5
0033249	1.94:1	5,500	3.5
0027012	3.76:1	10,500	1.8
0037925	3.76:1	10,500	1.8
0026646	6.11:1	17,500	1.1
0033248	6.11:1	17,500	1.1

## Standard 50 hp Series

- Hydraulic Supply: 3000 psi @ up to 24 gpm
- Weight in Air: approx 85 lb
- Weight in Seawater: approx 70 lb

OI Part #	Input/Output Ratio	Max Output Pressure psi	Max Output Flow gpm
0031802	1.56:1	4,400	12.0
0033249	4.22:1	12,000	4.5

