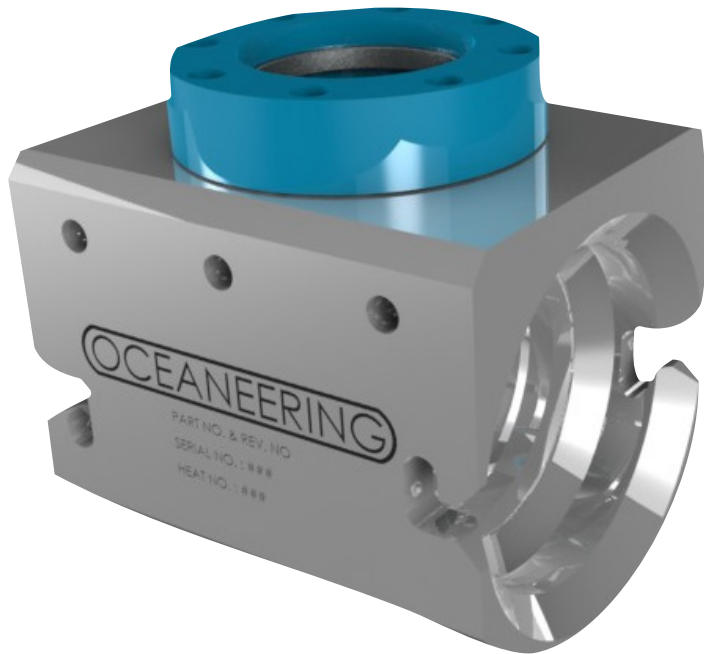


HOT STABS – 4-IN



The DTS 4-in 3,000 psi hot stab and manifold provide an excellent combination of low pressure drop, large flow bore and pressure rating. The manifold is designed to accept the hot stab from either side for greater ROV accessibility in tight installation locations. The j-lock handle on the stab rotates independently of the stab body to reduce the torque requirement for locking. The stabs can be ported to customer specification and additional pressure ratings may be available depending on material choices.

Technical Data / Specifications

Specification:

Pressure: 3,000 psi Maximum Input
Connection Type: 4 in Grayloc® Hub

Size & Weight - Male Stab:

Diameter: 7.5 in
Length: 17.75 in
Weight: 45 lb

Size & Weight - Female Receptacle:

Width: 9.5 in
Length: 10.25 in
Height: 12.0 in
Weight: 172 lb

