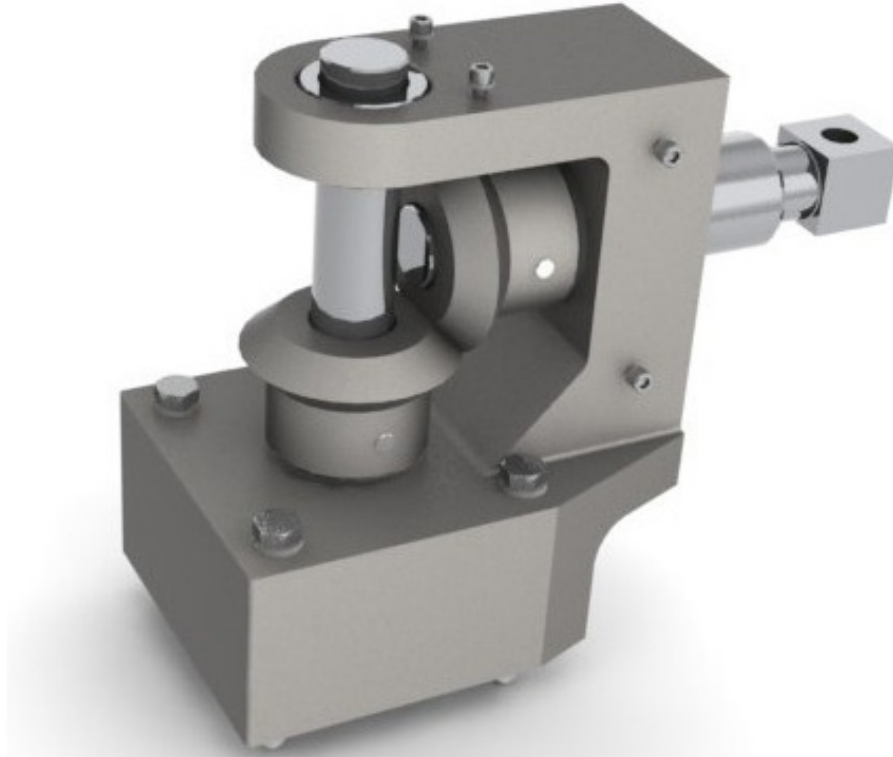


90° GEAR BOX



The 90° Gear Box is designed for long-term subsea use to redirect rotary motion. All load-bearing components are constructed of highly corrosion-resistant materials. This unit comes with a 316 Stainless Steel Debris Cover (not shown).

Technical Data / Specifications

Dimensions:

Length:	9.54 in
Width:	4.32 in
Height:	8.02 in

Weight:

Weight:	22 lb
---------	-------

Performance Data:

Speed:	60 rpm
Nominal Torque:	70 ft-lb
Max Torque:	90 ft-lb
Damage Torque:	130 ft-lb

Materials:

Body:	316 Stainless Steel
Drive Shafts:	Nitronic 50
Miter Gears:	Nitronic 50
Bearings:	Nitronic 50
Fasteners:	316 Stainless Steel

