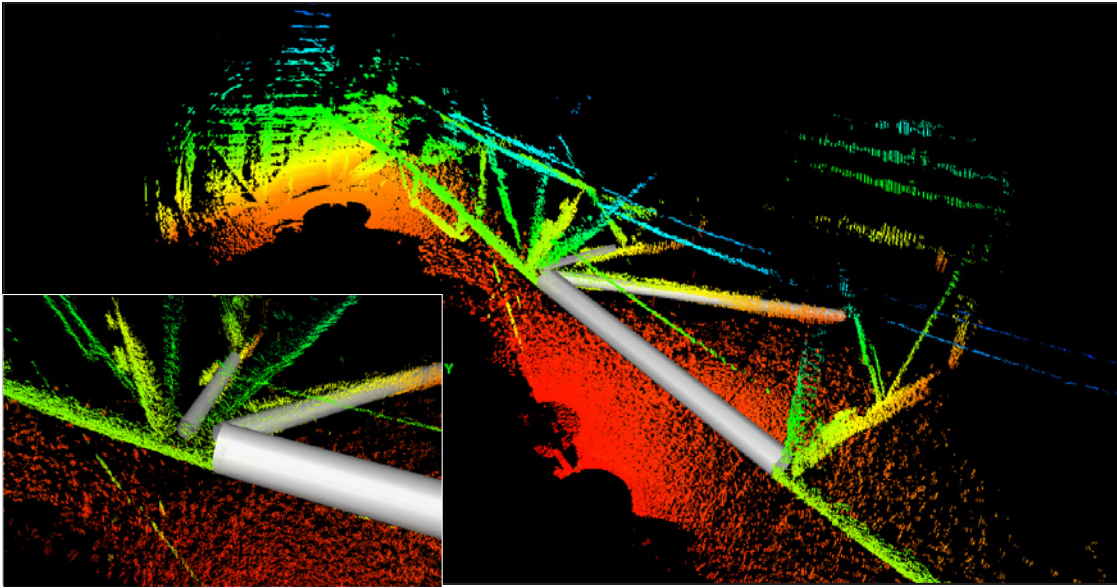


3D BLUEVIEW SONAR



The 3D BlueView sonar captures high resolution imagery of underwater areas, structures, and objects for underwater detection, identification, and inspection purposes. The 3D mechanical scanning sonars create 3D point clouds of an underwater scene with minimal training required. Easy to operate, the compact lightweight units are deployed on a tripod or ROV. The scanning sonar head and integrated mechanical pan and tilt mechanism generate both sector scans and spherical scan data.

Technical Data / Specifications

Applications:

- 3D Site Survey
- 3D Structure Inspection
- Oil Rig Decommissioning
- Bridge Inspections
- Underwater Metrology

Electrical Interface:

Input Voltage: 20 – 29 V DC
Power: 45 W Maximum
Communications
(Sonar / Pan & Tilt): Ethernet / RS485

Specification:

Frequency: 1.35 MHz
Max Range: 30 m
Beam Width: 45° x 1°
Number of Beams: 256
Depth Rating: 1,000 m

Weight:

In Air: 21.7 lb
In Saltwater: 8.2 lb

Dimensions:

Width: 10.5 in
Length: 9.2 in
Height: 5.4 in

